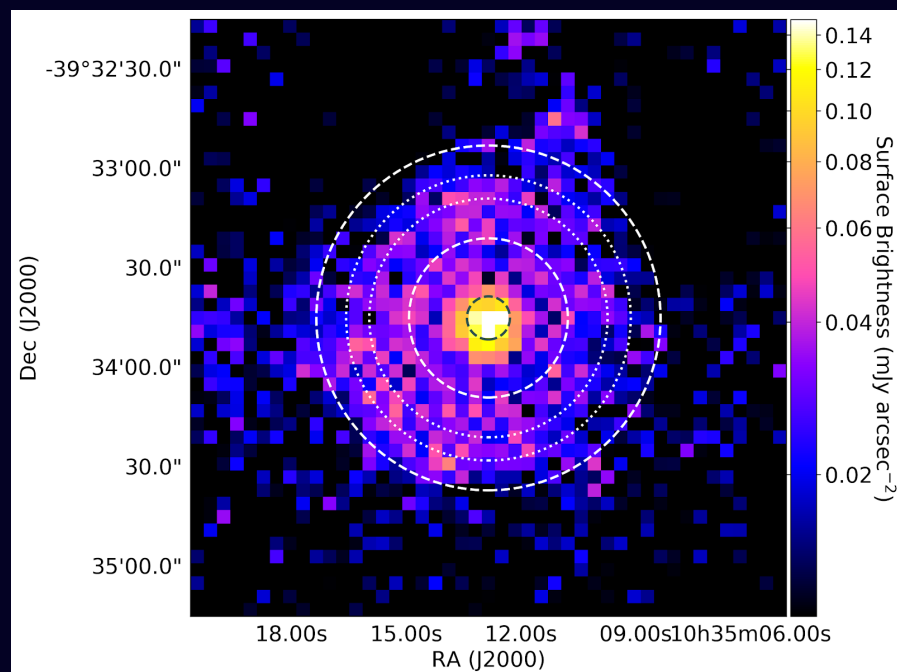
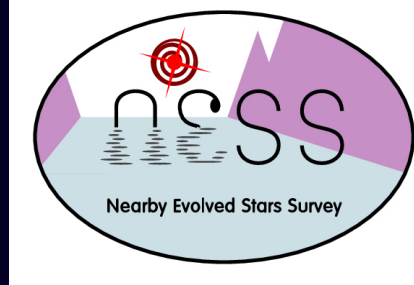




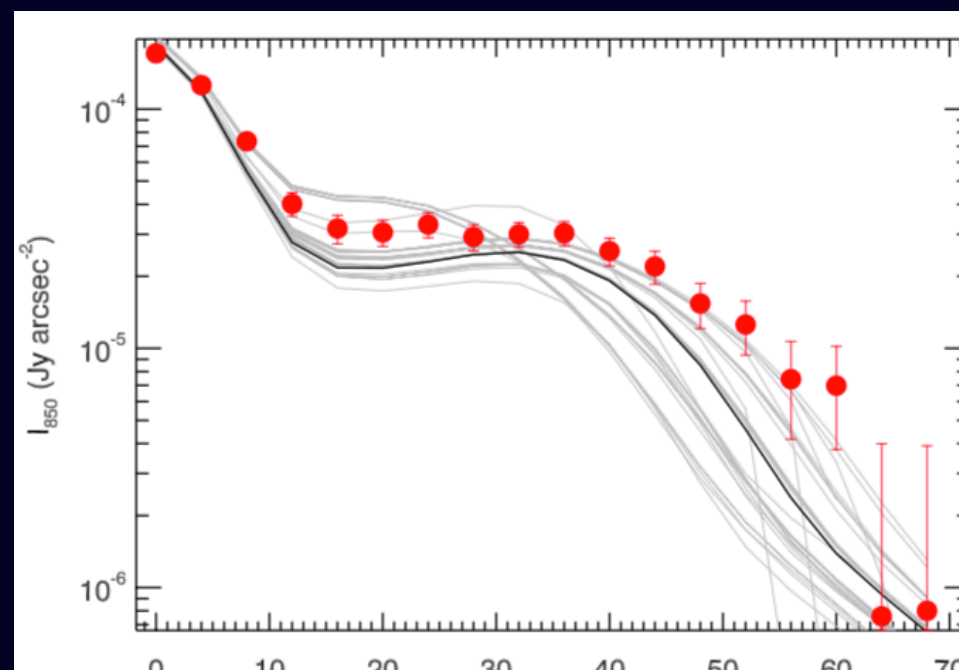
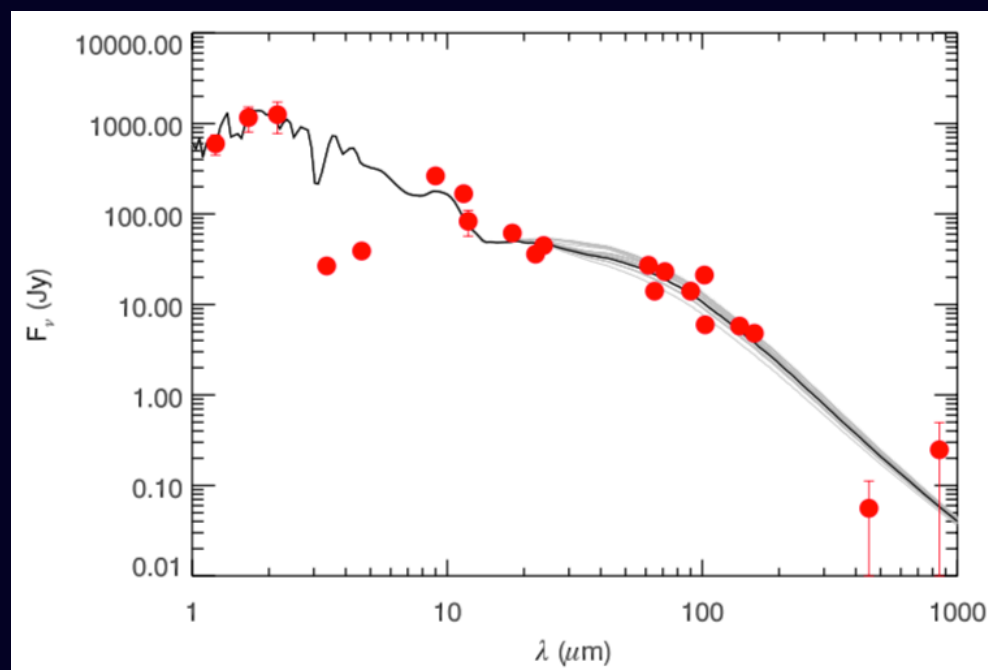
Modelling dust in NESS targets (P112)

Thavisha Dharmawardena, Sindsro Srinivasan,
Peter Scicluna, Ciska Kemper & NESS team



Dharmawardena et al. in prep

- JCMT SCUBA-2 data of nearby AGB stars as part of NESS (<http://evolvedstars.space>).
- U Ant detached shell detected for the first time in the sub-mm!
- Simultaneous fits to the SED and intensity profile... first step towards fully self-consistent modelling to be extended to entire NESS sample.



This presentation has received funding from the European Union's Horizon 2020 research and innovation programme under grant agreement No 730562 [RadioNet]