

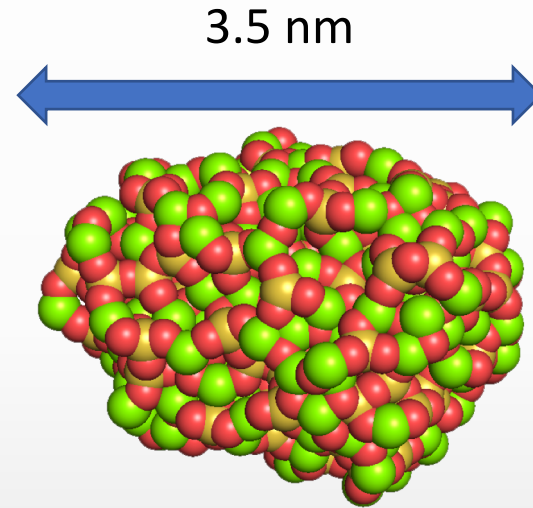
# REALISTIC MODELLING OF NANO-AGGREGATED MAGNESIUM SILICATE DUST PARTICLES USING ATOMISTIC SIMULATIONS

Antoni Macià Escatllar, Stefan T. Bromley

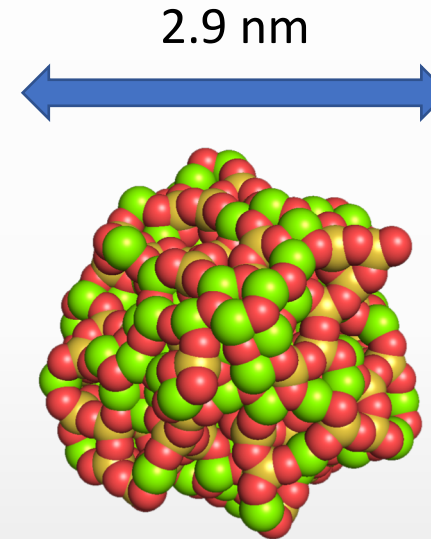
How does  
temperature affect  
nucleation?

Impact on the IR  
spectra?

How can  
computational  
modelling help in  
dust description?



Atomistic atom by atom growth  
of Mg Silicates nanoparticles  
~10nm in AGB star conditions.



Physical properties such as **Sa/V**, **shape**,  
**porosity** can be **extracted directly** from the  
models and related to formation conditions

POSTER Nº:  
171 !