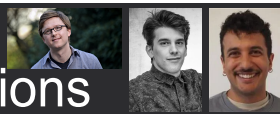


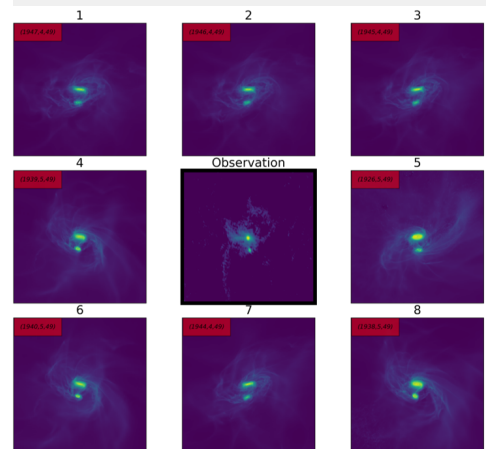
Simulated analogues: a new methodology for non-parametric matching of models to observations

Vito Tuhtan⁽¹⁾, Rami Al-Belmeisi⁽²⁾, Troels Haugbølle⁽¹⁾,
Rajika Kuruwita^(3,1), Mikkel Christensen⁽¹⁾

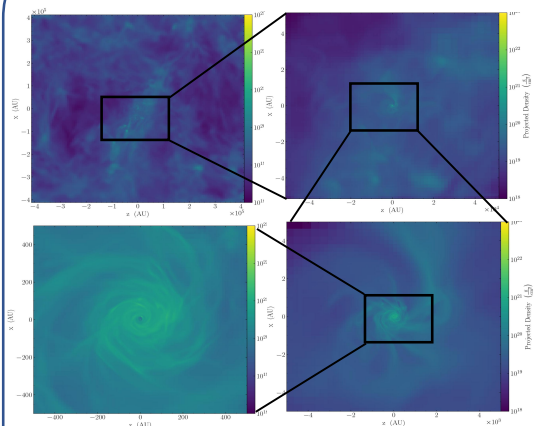
⁽¹⁾Niels Bohr Institute, University of Copenhagen, ⁽²⁾DTU Compute, ⁽³⁾Heidelberg Institute for Theoretical Studies



UNIVERSITY OF
COPENHAGEN



ZOOM - IN SIMULATIONS



Giant
Molecular
Cloud



Individual
protostars

SIMULATED ANALOGUES

Synthetic
observations
catalogue

MACHINE LEARNING

System parameter
prediction

Similar image
retrieval

PROTESTELLAR BINARY OBSERVATIONS

