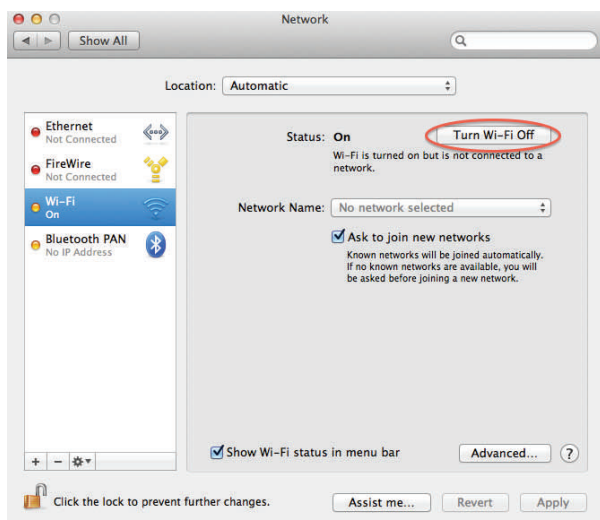


## Accessing eduroam with Mac Mountain Lion

To configure and access the wireless eduroam network using Mac Mountain Lion your computer must meet the following requirements. Your operating system must be fully updated. Your computer must have a wireless network adapter. Finally your computer must be within range of an eduroam access point.

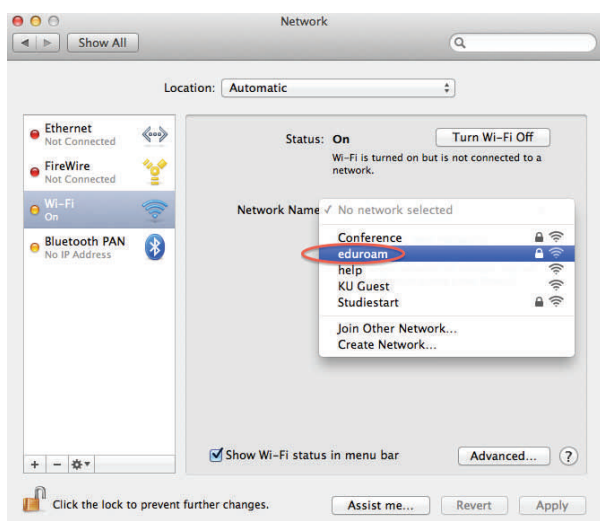


Open **System Preferences**.

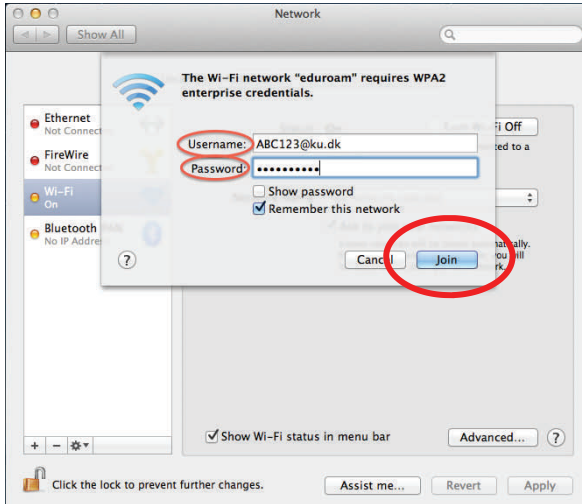
Open **Network Preferences**.

Choose **Wi-Fi**

Turn **Wifi On**.

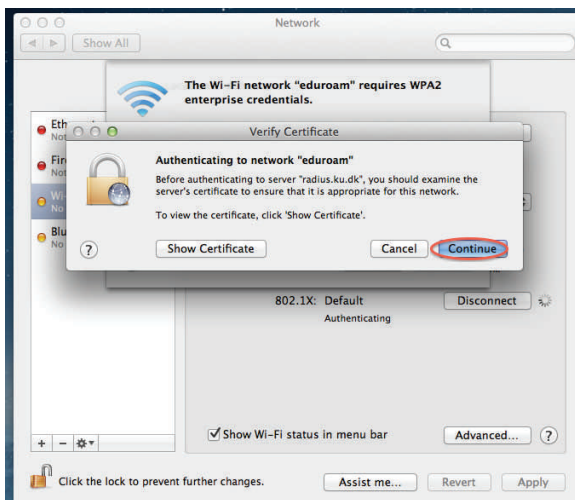


Choose **Eduroam** from the drop down menu.

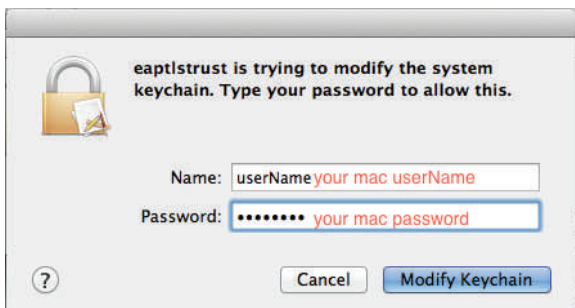


Type in your **KU Username** followed by **@ku.dk** and **Password**.

Click **Join**.

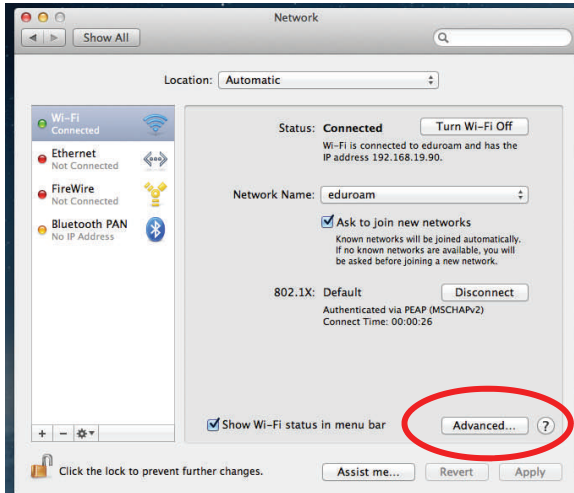


Click **Continue**.



Type in your **Mac Username** followed by your personal **Mac password**.

**NB: You will need to provide your local username and password for authentication.**



Click **Apply**.

Close the network and system preferences

You now have access to the wireless eduroam network. To test your connectivity go to [www.ku.dk](http://www.ku.dk)

## FAQ

If you still cannot connect to the wireless eduroam try using the troubleshootguide below. When you logon to eduroam, you have to type in your password in 30 seconds. This is a security measure. If it happens then turn of your internet connection and try again.

Each faculty at KU only have a certain amount of IP-adresses available for eduroam connection. This may result in an error at logon. This problem can only be solve by your local faculty IT-department.

Finally it is important to notice that your password expires every three month. When you change it you have to reconfigure the eduroam network to avoid problems. For Mac users you need to delete all prior network profiles with eduroam to ensure that your new installation works.