

# GSS User's Guide Ver 0.46.01

Gong Ding  
University of Science and Technology of China



Email: gdiso@ustc.edu

March 3, 2008

## Contents

<b>1</b>	<b>Introduction</b>	<b>2</b>
1.1	The format of input card . . . . .	2
1.2	The sequence of input deck . . . . .	3
1.3	Statement Description Format . . . . .	3
<b>2</b>	<b>Global Specification</b>	<b>4</b>
2.1	SET . . . . .	4
<b>3</b>	<b>Mesh Generation</b>	<b>5</b>
3.1	Introduction . . . . .	5
3.2	Coordinate System . . . . .	5
3.3	MESH . . . . .	6
3.4	XMESH and YMESH . . . . .	7
3.5	ELIMINATE . . . . .	8
3.6	SPREAD . . . . .	9
3.7	REGION . . . . .	10
3.8	SEGMENT . . . . .	12
3.9	REFINE . . . . .	14
<b>4</b>	<b>Doping Profile</b>	<b>15</b>
<b>5</b>	<b>Voltage and Current Source</b>	<b>16</b>
5.1	Introduction . . . . .	16
5.2	ISOURCE . . . . .	16
5.3	VSOURCE . . . . .	18

<b>1</b>	<b>INTRODUCTION</b>	<b>2</b>
<b>6</b>	<b>Boundary Condition</b>	<b>20</b>
6.1	BOUNDARY and CONTACT . . . . .	20
6.2	ATTACH . . . . .	23
<b>7</b>	<b>Physical Model Interface</b>	<b>24</b>
<b>8</b>	<b>Solve Specification</b>	<b>25</b>
8.1	Introduction . . . . .	25
8.2	METHOD . . . . .	25
8.3	SOLVE . . . . .	28
8.4	AC Sweep Solver . . . . .	30
8.5	EM FEM Solver . . . . .	31
8.6	IV File Format . . . . .	33
<b>9</b>	<b>File I/O</b>	<b>34</b>
9.1	Introduction . . . . .	34
9.2	IMPORT and EXPORT . . . . .	34
<b>10</b>	<b>Post Process</b>	<b>35</b>
10.1	Plot . . . . .	35
10.2	Probe . . . . .	36
<b>11</b>	<b>Convergence Problem</b>	<b>37</b>
<b>12</b>	<b>Memory and CPU requirement</b>	<b>38</b>
<b>A</b>	<b>GNU Free Documentation License</b>	<b>39</b>

# 1 Introduction

## 1.1 The format of input card

Like PISCES and MEDICI, GSS takes its command cards from a user specified disk file. The input is read by GSS's build-in command parser. Each line is recognized as a particular statement, identified by the first word (named as keyword) on the card. The remaining parts of the line are the parameters of that keyword. The statement has the format as follow:

KEYWORD [parameters]

The words on a line are separated by blanks or tabs. If more than one line of input is necessary for a particular statement, it may be continued on subsequent lines by placing a backslash sign '\' as the last non-blank character on the current line. Parameters may be one of four types: float, integer, bool or string. The float point number supports C style double precision real number. The bool value can be True, On, False and Off. String value is made up of lower line, dot, blank, number and alpha characters. The string should not begin with number and quotation marks are only needed if it contains blank. At last, the length of string is limited to 31 characters. All the parameter specification has the same format as

```
parameter_name = [number|integer|bool|string]
```

In the card descriptions, keywords and parameters are not case sensitive. But user input strings do, because file name may be specified by the string. Comments must begin with '#' and can be either an separated line or locate at the end of current statement.

## 1.2 The sequence of input deck

Most of the cards GSS used are sequence insensitive. The order of occurrence of cards is significant in only two cases. The mesh generation cards must have the right order, or it can't work properly. GSS will execute the 'driven' cards sequently. So the placement order of 'driven' cards will affect simulation result.

## 1.3 Statement Description Format

### Syntax of Parameter Lists

The following special characters are used in the formatted parameter list:

```
Angle brackets < > - parameter type
Square brackets [ ] - optional group
Vertical bar |      - alternate choice
Parentheses ( )    - group hierarchy
Braces { }         - group hierarchy with high level
```

### Value Types

Besides some string parameters which have fixed values, most of the parameters need a user defined value. A lower case letter in angle brackets represents a value of a given type. The following types of values are represented:

```
<n> - double precision numerical value
<i> - integer value
<b> - bool value
<s> - string value
```

## 2 Global Specification

### 2.1 SET

#### Description

Some global definitions such as the unit scale and environment temperature must be set before the initiation of GSS's build-in data. The SET command will do the definition.

#### Syntax

```
set Carrier=(p|n|pn)
set Z.Width=<n>
set LatticeTemp=<n>
set DopingScale=<n>
```

parameter	type	default	unit	description
Carrier	string	pn	-	The <b>Carrier</b> parameter specifies whether single or dual carriers will be modeled during the simulation. But at present, GSS only supports dual carriers, so the parameter value must always be "pn"
Z.Width	number	1	$\mu\text{m}$	<b>Z.Width</b> is needed by current calculation. Because GSS is a two-dimensional simulator, the length in Z direction must be given if GSS simulates transistor with external circuit.
LatticeTemp	number	300	K	<b>LatticeTemp</b> defines external temperature.
DopingScale	number	1e18	$\text{cm}^{-3}$	<b>DopingScale</b> will effect GSS's inner unit scale procedure which shows great influence to the convergence of nonlinear solver. In most case, set this value to $\max(\text{Nd}, \text{Na})$ is a good choice. But sometimes, a smaller value may be better.

#### Example

```
set Carrier      = pn      # specify carrier type.
set Z.Width      = 2       # device width in Z dimension. Unit:um
set LatticeTemp  = 3e2     # specify initial temperature of device. Unit:K
set DopingScale  = 1e16    # set carrier scale reference value
```

## 3 Mesh Generation

### 3.1 Introduction

The early version of GSS was designed as a pure solver. It uses CGNS(CFD General Notation System) as semiconductor device model file. This file format provides the ability to store grid, solution data, material information, boundary condition and connectivity in a single, well-defined and easy-to-use form. More important, CGNS has been accepted and supported by most of the commercial CFD corporations. So users have various ways to create their models. For example, models can be created by SGFramework, converted from MEDICI TIF file by TIFTOOL (shipped with GSS) or generated by ICEMCFD, which is a commercial CFD pre-processor.

Until very recently, the PISCES like model description language had been introduced to GSS. The mesh generation arithmetic works as follows. First, GSS builds the rectangle skeleton mesh by the model description statements; Then, GSS employs Triangle (developed by Jonathan Richard Shewchuk) to form the triangulate mesh and output the mesh to an initial CGNS file. At last, GSS reads the CGNS file again, computes the doping profile and finishes the remaining calculations.

Triangle uses delaunay arithmetic, which forms a high quality isotropic mesh. At the same time, MEDICI uses quadtree arithmetic to generate its mesh, which often gives a regular mesh but the mesh quality may be poor near the irregular boundary.

### 3.2 Coordinate System

The mesh generator uses a Cartesian coordinate system, in which the top horizontal line has the maximal y coordinate and left vertical line has the minimal x coordinate.

Note: This setting is different from PISCES and its commercial versions like MEDICI and ATLAS.

### 3.3 MESH

This statement indicates the beginning of the mesh generator.

#### Syntax

```
MESH [ Type=<s> ] ModelFile=<s> [ Triangle=<s> ]
```

parameter	type	default	unit	description
Type	string	-	-	<b>Type</b> indicates which mesh generator is to be used. But at present it is useless since GSS only has one mesh generator.
ModelFile	string	-	-	<b>ModelFile</b> gives the name of temporary CGNS file.
Triangle	string	pzq30AD	-	<b>Triangle</b> passes parameters to Triangle code. The detailed description of this string can be found at Triangle's home page <a href="http://www.cs.cmu.edu/quake/triangle.html">http://www.cs.cmu.edu/quake/triangle.html</a> .

#### Example

```
MESH Type=GSS ModelFile=pn.cgns Triangle="pzA"
```

### 3.4 XMESH and YMESH

The **XMESH** and **YMESH** cards specify the location of lines of nodes in a rectangular mesh. The original mesh can be modified by following mesh cards like **ELIMINATE** and **SPREAD**.

#### Syntax

```

XMESH { WIDTH=<n> | ( X.MIN=<n> X.MAX=<n> ) }
      { N.SPACES=<i> [RATIO=<n>] | H1=<n> [H2=<n>] }
YMESH { DEPTH=<n> | ( Y.MAX=<n> Y.MIN=<n> ) }
      { N.SPACES=<i> [RATIO=<n>] | H1=<n> [H2=<n>] }

```

parameter	type	default	unit	description
WIDTH	number	-	$\mu\text{m}$	The distance of the grid section in x direction.
DEPTH	number	-	$\mu\text{m}$	The distance of the grid section in y direction.
X.MIN	number	-	$\mu\text{m}$	The x location of the left edge of the grid section. synonym: <b>X.LEFT</b> . The value of <b>X.MIN</b> will be set to right edge of the previous grid section automatically.
X.MAX	number	-	$\mu\text{m}$	The x location of the right edge of the grid section. synonym: <b>X.RIGHT</b> .
Y.MIN	number	-	$\mu\text{m}$	The y location of the bottom edge of the grid section. synonym: <b>Y.BOTTOM</b> .
Y.MAX	number	-	$\mu\text{m}$	The y location of the top edge of the grid section. synonym: <b>Y.TOP</b> . The value of <b>Y.MAX</b> will be set to bottom edge of the previous grid section automatically.
N.SPACES	integer	1	-	The number of grid spaces in the grid section.
RATIO	number	1.0	-	The ratio between the sizes of adjacent grid spaces in the grid section. <b>RATIO</b> should usually lie between 0.667 and 1.5.
H1	number	-	$\mu\text{m}$	The size of the grid space at the begin edge of the grid section.
H2	number	-	$\mu\text{m}$	The size of the grid space at the end edge of the grid section.

#### Example

```

XMESH  X.MIN=0.0  X.MAX=0.50  N.SPACES=8
YMESH  DEPTH=0.1  N.SPACES=8  RATIO=0.8
YMESH  DEPTH=0.1  N.SPACES=20
YMESH  DEPTH=0.6  H1=0.005  H2=0.050

```

### 3.5 ELIMINATE

The **ELIMINATE** statement eliminates mesh points along planes in a rectangular grid over a specified volume. This statement is useful for eliminating nodes in regions of the device structure where the grid is more dense than necessary. Points along every second line in the chosen direction within the chosen range are removed, except the first and last line. Successive eliminations of the same range remove points along every fourth line, eighth line, and so on.

#### Syntax

```
ELIMINATE { DIRECTION = (ROWS | COLUMNS) }
           [ {X.MIN=<n> | IX.MIN=<i>} ] [ {X.MAX=<n> | IX.MAX=<i>} ]
           [ {Y.MIN=<n> | IY.MAX=<i>} ] [ {Y.MAX=<n> | IY.MIN=<i>} ]
```

parameter	type	default	unit	description
DIRECTION	string	-	-	Specifies that horizontal or vertical lines of nodes are eliminated.
X.MIN	number	XMIN	$\mu\text{m}$	The minimum x location of the rectangular volume in which nodes are eliminated. synonym: <b>X.LEFT</b> .
X.MAX	number	XMAX	$\mu\text{m}$	The maximum x location of the rectangular volume in which nodes are eliminated. synonym: <b>X.RIGHT</b> .
IX.MIN	integer	0	-	The minimum x node index of the rectangular volume in which nodes are eliminated. synonym: <b>IX.LEFT</b> .
IX.MAX	integer	IXMAX-1	-	The maximum x node index of the rectangular volume in which nodes are eliminated. synonym: <b>IX.RIGHT</b> .
Y.MIN	number	YMIN	$\mu\text{m}$	The minimum y location of the rectangular volume in which nodes are eliminated. synonym: <b>Y.BOTTOM</b> .
Y.MAX	number	YMAX	$\mu\text{m}$	The maximum y location of the rectangular volume in which nodes are eliminated. synonym: <b>Y.TOP</b> .
IY.MIN	integer	0	-	The minimum y node index of the rectangular volume in which nodes are eliminated. synonym: <b>IY.TOP</b> .
IY.MAX	integer	IYMAX-1	-	The maximum y node index of the rectangular volume in which nodes are eliminated. synonym: <b>IY.BOTTOM</b> .

#### Example

```
ELIMINATE Direction=COLUMNS Y.TOP=-1.0
ELIMINATE Direction=ROWS      IX.MAX=8
```



### 3.6 SPREAD

The **SPREAD** statement provides a way to adjust the y position of nodes along grid lines parallel to the x-axis in a rectangular mesh to follow surface and junction contours.

#### Syntax

```
SPREAD LOCATION=(LEFT|RIGHT) WIDTH=<n> UPPER=<i> LOWER=<i> [ENCROACH=<n>]
{ Y.LOWER=<n> | (THICKNES=<n> [VOL.RAT=<n>]) }
[GRADING=<n>]
```

parameter	type	default	unit	description
LOCATION	string	-	-	Specifies which side of the grid is distorted.
WIDTH	number	0.0	$\mu\text{m}$	The width of the distorted region measured from the left or right edge of the structure.
UPPER	integer	0	-	The index of the upper y-grid line of the distorted region.
LOWER	integer	0	-	The index of the lower y-grid line of the distorted region.
ENCROACH	number	1.0	-	The factor which defines the abruptness of the transition between distorted and undistorted grid. The transition region becomes more abrupt with smaller <b>ENCROACH</b> factors. The minimum allowed value is 0.1.
Y.LOWER	number	-	$\mu\text{m}$	The vertical location in the distorted region where the line specified by <b>LOWER</b> is moved. The grid line specified by <b>UPPER</b> does not move if this parameter is specified.
THICKNESS	number	-	$\mu\text{m}$	The thickness of the distorted region. Specifying <b>THICKNESS</b> usually causes the positions of both the <b>UPPER</b> and <b>LOWER</b> grid lines to move.
VOL.RAT	number	0.44	-	The ratio of the displacement of the lower grid line to the net change in thickness. If <b>VOL.RAT</b> is 0, the location of the lower grid line does not move. If <b>VOL.RAT</b> is 1, the upper grid line does not move.
GRADING	number	1.0	-	The vertical grid spacing ratio in the distorted region between the y-grid lines specified with <b>UPPER</b> and <b>LOWER</b> . The spacing grows or shrinks by <b>GRADING</b> in each interval between lines. <b>GRADING</b> should usually lie between 0.667 and 1.5.

#### Example

```
SPREAD Location=Left Width=0.625 Upper=0 Lower=2 Thickness=0.1
SPREAD Location=Right Width=0.625 Upper=0 Lower=2 Thickness=0.1
```

### 3.7 REGION

The **REGION** statement defines the location of materials in the mesh. Currently, GSS supports following materials: null space including Vacuum and Air; semiconductor material including Si, Ge, GaAs,  $\text{Si}_{1-x}\text{Ge}_x$ ,  $\text{Al}_x\text{Ga}_{1-x}\text{As}$  and  $\text{In}_x\text{Ga}_{1-x}\text{As}$ ; insulator material including  $\text{SiO}_2$  and electrode region including Elec, Al and PolySi.

#### Syntax

```
REGION Shape=Rectangle Label=<s> Material=<s>
      [ X.MOLE=<n> [ MOLE.SLOPE=<n> | MOLE.END=<n> ] MOLE.GRAD=(X.Linear|Y.Linear) ]
      [ {X.MIN=<n> | IX.MIN=<n>} ] [ {X.MAX=<n> | IX.MAX=<n>} ]
      [ {Y.MIN=<n> | IY.MIN=<n>} ] [ {Y.MAX=<n> | IY.MAX=<n>} ]
REGION Shape=Ellipse Label=<s> Material=<s>
      {CentreX=<n> CentreY=<n> MajorRadii=<n> MinorRadii=<n> Theta=<n> Division=<i>}
```

parameter	type	default	unit	description
Shape	string	-	-	Specifies the shape of the region. Can be Rectangle or Ellipse.
Label	string	-	-	Specifies the identifier of this region, limited to 12 chars.
Material	string	-	-	Specifies the material of the region. Material strings can be Vacuum, Air, Si, Ge, GaAs, SiGe, AlGaAs, InGaAs, SiO <sub>2</sub> , Elec, Al and PolySi.
X.MOLE	number	0.0	-	The mole fraction to use in the region for compound materials. For graded compounds, <b>X.MOLE</b> represents the initial mole fraction at the left, top, or front edge of the region depending on whether X.Linear, or Y.Linear, respectively, is specified.
MOLE.SLOPE	number	0.0	$\mu\text{m}^{-1}$	The slope of the mole fraction for graded compounds. If this parameter is used, the mole fraction has a value of <b>X.MOLE</b> at the left, top or front edge of the region and a value of <b>X.MOLE</b> + width * <b>X.SLOPE</b> at the right, bottom or back edge of the region, where width is the width or depth of the region.
MOLE.END	number	0.0	-	The mole fraction for graded compounds at the right, bottom, or backedge of the region depending on whether X.Linear, or Y.Linear, respectively, is specified.
MOLE.GRAD	string	Y.Linear	-	Specifies that the mole fraction grading is in the x or y direction.
X.MIN	number	XMIN	$\mu\text{m}$	The minimum x location of the region. synonym: <b>X.LEFT</b> .
X.MAX	number	XMAX	$\mu\text{m}$	The maximum x location of the region. synonym: <b>X.RIGHT</b> .
IX.MIN	integer	0	-	The minimum x node index of the region. synonym: <b>IX.LEFT</b> .
IX.MAX	integer	IXMAX-1	-	The maximum x node index of the region. synonym: <b>IX.RIGHT</b> .
Y.MIN	number	YMIN	$\mu\text{m}$	The minimum y location of the region. synonym: <b>Y.BOTTOM</b> .

Y.MAX	number	YMAX	$\mu\text{m}$	The maximum y location of the region. synonym: <b>Y.TOP</b> .
IY.MIN	integer	0	-	The minimum y node index of the region. synonym: <b>IY.TOP</b> .
IY.MAX	integer	IYMAX-1	-	The maximum y node index of the region. synonym: <b>IY.BOTTOM</b> .
CentreX	number	0.0	$\mu\text{m}$	The x location of the center of ellipse.
CentreY	number	0.0	$\mu\text{m}$	The y location of the center of ellipse.
MajorRadii	number	1.0	$\mu\text{m}$	The length of the major radii of ellipse.
MinorRadii	number	MajorRadii	$\mu\text{m}$	The length of the minor radii of ellipse.
Theta	number	0.0	degree	The angle of the first division point located on the boundary of ellipse region.
Division	integer	12	-	The number of points which divide the boundary of ellipse into small segments.

### Example

```

REGION  Label=Si1  Material=Si    Y.TOP= 0.000  Y.BOTTOM=-0.100
REGION  Label=SiGe1 Material=SiGe  Y.TOP=-0.100  Y.BOTTOM=-0.125 \
        X.MOLE=0.0  Mole.End=0.2
REGION  Label=Hole  Material=SiO2 Shape=Ellipse CentreX=2.0 CentreY=-0.5 \
        Division=24 MajorRadii=0.3 MinorRadii=0.3

```

### Hint

Several regions can be defined one by one. But users should be careful that regions can't get cross each other. The situations showed by Fig1 (A) and (B) are allowed, but (C) will break the mesh generator of GSS. The ellipse region is used for photon crystal simulation. By choosing different division number, GSS can build triangle, rectangle, hexagon as well as ellipse (circle). Fig2 shows different shapes of polygons build by ellipse.

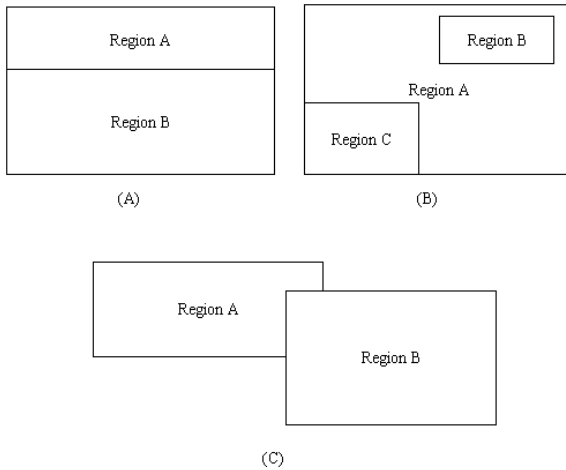


Figure 1: Multi-Region definition.

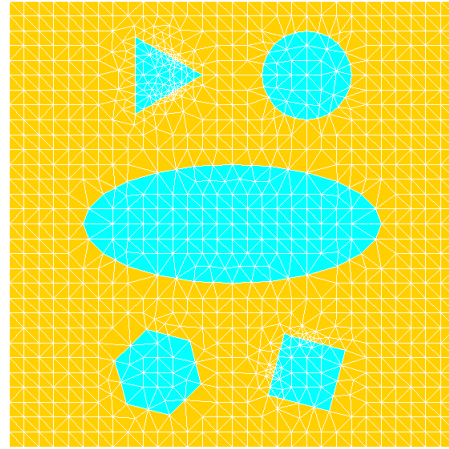


Figure 2: Define shapes of ellipse region

### 3.8 SEGMENT

Segment is a group of boundary edges which have the same attribute. This statement specifies the label of a special segment. User can assign the segment with a special boundary type by **BOUNDARY** statement.

#### Syntax

```
SEGMENT Label=<s> { Location=<s> | ( Direction=<s> X=<n> | Y=<n> ) }
      [ {X.MIN=<n> | IX.MIN=<n>} ] [ {X.MAX=<n> | IX.MAX=<n>} ]
      [ {Y.MIN=<n> | IY.MIN=<n>} ] [ {Y.MAX=<n> | IY.MAX=<n>} ]
```

parameter	type	default	unit	description
Label	string	-	-	Specifies the identifier of this segment, limited to 31 chars.
Location	string	-	-	Specifies which side the segment lies along. Allowed: TOP, BOTTOM, LEFT or RIGHT.
Direction	string	-	-	Specifies the dimensional orientation of the segment. Allowed: Horizontal or Vertical.
X	number	0.0	$\mu\text{m}$	Specifies the X coordinate of the vertical segment.
Y	number	0.0	$\mu\text{m}$	Specifies the Y coordinate of the horizontal segment.
X.MIN	number	XMIN	$\mu\text{m}$	The minimum x location of the segment. synonym: <b>X.LEFT</b> .
X.MAX	number	XMAX	$\mu\text{m}$	The maximum x location of the segment. synonym: <b>X.RIGHT</b> .
IX.MIN	integer	0	-	The minimum x node index of the segment. synonym: <b>IX.LEFT</b> .
IX.MAX	integer	IXMAX-1	-	The maximum x node index of the segment. synonym: <b>IX.RIGHT</b> .
Y.MIN	number	YMIN	$\mu\text{m}$	The minimum y location of the segment. synonym: <b>Y.BOTTOM</b> .
Y.MAX	number	YMAX	$\mu\text{m}$	The maximum y location of the segment. synonym: <b>Y.TOP</b> .
IY.MIN	integer	0	-	The minimum y node index of the segment. synonym: <b>IY.TOP</b> .
IY.MAX	integer	IYMAX-1	-	The maximum y node index of the segment. synonym: <b>IY.BOTTOM</b> .

#### Example

```
SEGMENT Label=Anode    Direction=Horizontal X.MIN=0.0 X.MAX=1.0 Y=0.0
SEGMENT Label=Cathode  Direction=Horizontal X.MIN=0.0 X.MAX=3.0 Y=-3.0
SEGMENT Label=Anode    Location=TOP    X.MIN=0.0 X.MAX=1.0
SEGMENT Label=Cathode  Location=BOTTOM
```

**Hint**

Here, I have to mention the naming principle of segments. Beside labeled segments, the interface edges between two regions will be assigned by IF\_*name1*\_to\_*name2* in which the *name1* and *name2* is the labels of the two regions by alpha order. The remain edges of a region will be assigned by *name*\_Neumann and the *name* is the label of the region.

One can define a segment for probing data. Please refer to **PROBE** statement. This kind of segment should be placed inside a region. Equally, NO intersection to any other segment.

### 3.9 REFINE

The **REFINE** statement allows refinement of a coarse mesh.

#### Syntax

```
REFINE Variable=(Doping|Potential) Dispersion=<n> DivisionRatio=<n>
      [ Measure=(Linear|SignedLog) ] [ Triangle=<s> ]
```

parameter	type	default	unit	description
Variable	string	-	-	Specifies that the grid refinement is based on the potential or doping quantity.
Measure	string	Linear	-	Specifies that refinement is based on the original value or logarithm of the specified quantity.
Dispersion	number	3.0	-	The numerical criterion for refining a triangle. If the specified quantity differs by more than this parameter at the nodes of a triangle, the triangle is divided.
DivisionRatio	number	0.25	-	The area of divided triangle over area of original triangle. The default value suggests Triangle code divide one triangle into 4 small triangles. It is a suggestion value, Triangle code will adjust it for mesh quality reason.
Triangle	string	praq30Dz	-	Passes parameters to Triangle code.

#### Example

```
REFINE Variable=Doping Measure=SignedLog Dispersion=1
REFINE Variable=Potential Measure=Linear Dispersion=0.1
```

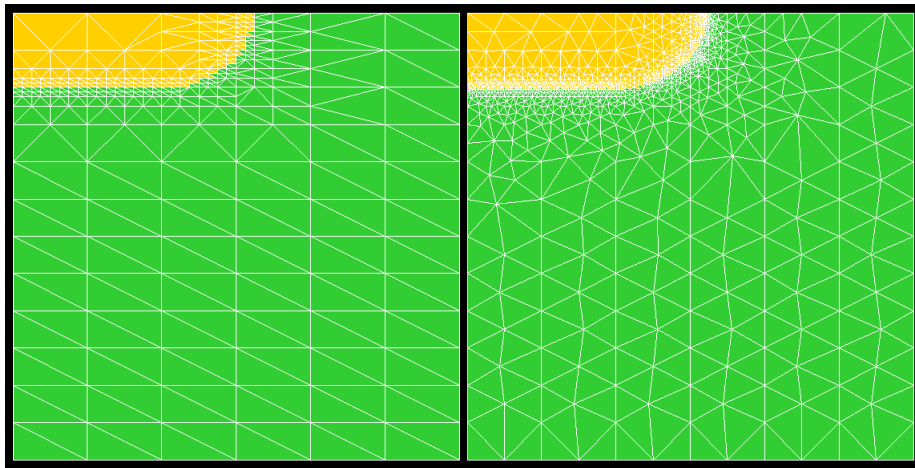


Figure 3: Mesh refinement for a PN diode.

## 4 Doping Profile

The **PROFILE** statement defines profiles for impurities to be used in the device structure. At present, GSS supports analytic profiles such as uniform, gauss distribution in both x-y directions and error function distribution in x direction while gauss distribution in y direction.

### Syntax

```
PROFILE { Type=Uniform      |
          Type=Gauss        [YCHAR=<n> | Y.Junction=<n>] [XCHAR=<n>] |
          Type=ErrorFunc    [YCHAR=<n>] [XCHAR=<n>] }
Ion=(Donor|Acceptor) { N.Peak=<n> | Dose=<n> }
[ X.MIN=<n> ] [ X.MAX=<n> ] [ Y.MIN=<n> ] [ Y.MAX=<n> ]
```

parameter	type	default	unit	description
Type	string	-	-	Specifies that the profile has a uniform, gauss or error function distribution.
Ion	string	-	-	Specifies the impurity ionization.
N.Peak	number	0.0	$cm^{-3}$	The peak impurity concentration for an impurity profile.
Dose	number	0.0	$cm^{-2}$	The dose of the impurity profile assuming a full Gaussian distribution.
X.MIN	number	0.0	$\mu m$	The minimum x location of the doping profile. synonym: <b>X.LEFT</b> .
X.MAX	number	XMIN	$\mu m$	The maximum x location of the doping profile. synonym: <b>X.RIGHT</b> .
Y.MIN	number	YMAX	$\mu m$	The minimum y location of the doping profile. synonym: <b>Y.BOTTOM</b> .
Y.MAX	number	0.0	$\mu m$	The maximum y location of the doping profile. synonym: <b>Y.TOP</b> .
YCHAR	number	0.25	$\mu m$	The y characteristic length of the profile outside the range of <b>Y.MIN</b> < y < <b>Y.MAX</b> .
XCHAR	number	0.25	$\mu m$	The x characteristic length of the profile outside the range of <b>X.MIN</b> < x < <b>X.MAX</b> .
Y.Junction	number	0.0	$\mu m$	The y location under the center of the profile where the magnitude of the profile being added equals the magnitude of the background profile.

### Example

```
PROFILE  Type=Uniform Ion=Donor      N.PEAK=1E15 \
          X.MIN=0.0 X.MAX=3.0 Y.TOP=0.0 Y.BOTTOM=-3.0
PROFILE  Type=Gauss   Ion=Acceptor  N.PEAK=1E18 X.CHAR=0.2 Y.JUNCTION=-0.5 \
          X.MIN=0.0 X.MAX=0.7 Y.TOP=0.0 Y.BOTTOM=0.0
PROFILE  Type=ErrorFunc Ion=Acceptor N.PEAK=2E17 X.CHAR=0.25 Y.CHAR=0.25 \
          X.MIN=0.5 X.MAX=1.0 Y.TOP=0.0 Y.BOTTOM=0.0
```

## 5 Voltage and Current Source

### 5.1 Introduction

For simulation the transient response of device, GSS supports several types of voltage and current source. The original models of these sources come from SPICE, a famous circuit simulation program. Several sources may be defined in one disk file. And the placement of these definitions are not critical. The sources can be assigned to electrode by **ATTACH** statement when needed.

### 5.2 ISOURCE

#### Syntax

```
isource Type=IDC ID=<s> Tdelay=<n> Iconst=<n>
isource Type=ISIN ID=<s> Tdelay=<n> Iamp=<n> Freq=<n>
isource Type=IEXP ID=<s> Tdelay=<n> TRC=<n> TFD=<n>
      TFC=<n> Ilo=<n> Ihi=<n>
isource Type=IPULSE ID=<s> Tdelay=<n> Tr=<n> Tf=<n>
      Pw=<n> Pr=<n> Ilo=<n> Ihi=<n>
isource Type=ISHELL ID=<s> DLL=<s> Func=<s>
```

parameter	type	default	unit	description
Type	string	-	-	This parameter declares which type of current source is defined here. Only four types of current source listed as previous are supported at present.
ID	string	-	-	A unique string which identifies the current source.
Tdelay	number	0	s	A proper delay time before the activation of this current source.
Iconst	number	0	mA	The current of the IDC.
Iamp	number	0	mA	The amplitude current of the ISIN.
Freq	number	0	Hz	The frequency of the ISIN.
TRC	number	0	s	The rise time constant of the IEXP.
TFD	number	0	s	The fall delay time of the IEXP.
TFC	number	0	s	The fall time constant of the IEXP.
Tr	number	0	s	The raise edge of the IPULSE.
Tf	number	0	s	The fall edge of the IPULSE.
Pw	number	0	s	The pulse with of the IPULSE.
Pr	number	0	s	The period of the IPULSE.
Ilo	number	0	mA	The low current for both IEXP and IPULSE.
Ihi	number	0	mA	The high current for both IEXP and IPULSE.
DLL	string	-	-	The name of dynamic library file.
Func	string	-	-	The name of the function loaded from dynamic library file.



**Example**

```
isource Type=IDC      ID=I1 Tdelay=0 Iconst=5
isource Type=ISIN      ID=I2 Tdelay=0 Iamp=0.1 Freq=1e6
isource Type=IEXP      ID=I3 Tdelay=0 TRC=1E-6 TFD=3E-6 TFC=1E-6 Ilo=0 Ihi=1
isource Type=IPULSE    ID=I4 Tdelay=0 Tr=1E-9 Tf=1E-9 Pw=5E-6 Pr=1E-5 Ilo=0 Ihi=1
```

### 5.3 VSOURCE

#### Syntax

```

vsouce Type=VDC ID=<s> Tdelay=<n> Vconst=<n>
vsouce Type=VSIN ID=<s> Tdelay=<n> Vconst=<n> Vamp=<n> Freq=<n> Alpha=<n>
vsouce Type=VEXP ID=<s> Tdelay=<n> TRC=<n> TFD=<n>
      TFC=<n> Vlo=<n> Vhi=<n>
vsouce Type=VPULSE ID=<s> Tdelay=<n> Tr=<n> Tf=<n>
      Pw=<n> Pr=<n> Vlo=<n> Vhi=<n>
vsouce Type=VSHELL ID=<s> DLL=<s> Func=<s>

```

parameter	type	default	unit	description
Type	string	-	-	This parameter declares which type of voltage source is defined here. Only four types of voltage source listed as previous are supported at present.
ID	string	-	-	A unique string which identifies the voltage source.
Tdelay	number	0	s	A proper delay time before the activation of this voltage source.
Vconst	number	0	V	The voltage of the VDC.
Vamp	number	0	V	The amplitude voltage of the VSIN.
Freq	number	0	Hz	The frequency of the VSIN.
Alpha	number	0	-	The exponential attenuation parameter of the VSIN.
TRC	number	0	s	The rise time constant of the VEXP.
TFD	number	0	s	The fall delay time of the VEXP.
TFC	number	0	s	The fall time constant of the VEXP.
Tr	number	0	s	The raise edge of the VPULSE.
Tf	number	0	s	The fall edge of the VPULSE.
Pw	number	0	s	The pulse with of the VPULSE.
Pr	number	0	s	The period of the VPULSE.
Vlo	number	0	V	The low voltage for both VEXP and VPULSE.
Vhi	number	0	V	The high voltage for both VEXP and VPULSE.
DLL	string	-	-	The name of dynamic library file.
Func	string	-	-	The name of the function loaded from dynamic library file.

#### Example

```

vsouce Type=VDC ID=GND Tdelay=0 Vconst=0
vsouce Type=VDC ID=VCC Tdelay=0 Vconst=5
vsouce Type=VSIN ID=Vs Tdelay=1e-6 Vamp=0.1 Freq=1e6
vsouce Type=VEXP ID=V1 Tdelay=0 TRC=1e-6 TFD=1e-6 TFC=1e-6 Vlo=0 Vhi=1
vsouce Type=VPULSE ID=V2 Tdelay=0 Tr=1e-9 Tf=1e-9 Pw=5e-6 Pr=1e-5 Vlo=0 Vhi=1
vsouce Type=VSHELL ID=VGauss DLL=foo.so Func=vsrc_gauss

```

**Hint**

GSS supports user defined voltage and current source by loading shared object (.so) file. The file which contains a user defined voltage source should have the function as follow. GSS will pass the argument time in the unit of second to the function *vsrc\_name* and get voltage value in the unit of volt. The current source function is almost the same except the unit of current is mA.

```
double vsrc_name(double time)
{
    /* calculate the voltage amplitude */
    return vsrc_amplitude;
}
double isrc_name(double time)
{
    /* calculate the current amplitude */
    return isrc_amplitude;
}
```

The c code should be linked with -shared and -fPIC option as:

```
gcc -shared -fPIC -o foo.so foo.c -lm
```

The *foo.so* file should be put in the same directory as input file.

## 6 Boundary Condition

### 6.1 BOUNDARY and CONTACT

The **BOUNDARY** statement sets boundary information to representing segments which defined by mesh generator or read from CGNS file.

GSS now fully support electrode region (the material of this region may be metal or poly-Si). One should use **CONTACT** statement to specify the electrode type of this region(s).

#### Syntax

```

BOUNDARY Type=OhmicContact      ID=<s>  [ Res=<n> ] [ Cap=<n> ] [ Ind=<n> ]
      [ Heat.Transfer=<n> ] [EXT.Temp=<n> ] [ConnectTo=<s>]
BOUNDARY Type=SchottkyContact   ID=<s>  [ Res=<n> ] [ Cap=<n> ] [ Ind=<n> ]
      WorkFunction=<n> [ Heat.Transfer=<n> ] [EXT.Temp=<n> ]
BOUNDARY Type=GateContact       ID=<s>  WorkFunction=<n>
      [ Res=<n> ] [ Cap=<n> ] [ Ind=<n> ]
      [ Heat.Transfer=<n> ] [EXT.Temp=<n> ]
BOUNDARY Type=InsulatorContact  ID=<s>  WorkFunction=<n> [ QF=<n> ]
      [ Res=<n> ] [ Cap=<n> ] [ Ind=<n> ]
      Thickness=<n> Eps=<n> [ Heat.Transfer=<n> ] [EXT.Temp=<n> ]
BOUNDARY Type=InsulatorInterface ID=<s>  [ QF=<n> ]
BOUNDARY Type=Heterojunction    ID=<s>  [ QF=<n> ]
BOUNDARY Type=NeumannBoundary   ID=<s>  [ Heat.Transfer=<n> ] [EXT.Temp=<n> ]

CONTACT Type=OhmicContact       ID=<s>
      [ Res=<n> ] [ Cap=<n> ] [ Ind=<n> ] [ConnectTo=<s>]
      [ Heat.Transfer=<n> ] [EXT.Temp=<n> ]
CONTACT Type=SchottkyContact    ID=<s>
      [ Res=<n> ] [ Cap=<n> ] [ Ind=<n> ]
      WorkFunction=<n> [ Heat.Transfer=<n> ] [EXT.Temp=<n> ]
CONTACT Type=GateContact        ID=<s>  WorkFunction=<n>
      [ Res=<n> ] [ Cap=<n> ] [ Ind=<n> ]
      [ Heat.Transfer=<n> ] [EXT.Temp=<n> ]
CONTACT Type=FloatMetal         ID=<s>  [ QF=<n> ]

```

parameter	type	default	unit	description
Type	string	-	-	This parameter declares which type of boundary condition is defined here.
ID	string	-	-	A unique string which identifies the corresponding segment.
Res	number	0	$\Omega$	The lumped resistance for the electrode.
Cap	number	0	F	The lumped capacitance for the electrode.
Ind	number	0	H	The lumped inductance for the electrode.
ConnectTo	string	-	-	Specifies the ID of an ohmic electrode which connect to this ohmic electrode. Useful for CMOS structure.

WorkFunction	number	4.7	V	The workfunction of the Schottky contact or gate material.
QF	number	0	$C \cdot cm^{-2}$	For InsulatorContact and InsulatorInterface bc: The surface charge density of semiconductor-insulator interface.
QF	number	0	$C \cdot cm^{-2}$	For Heterojunction bc: The surface charge density of heterojunction.
QF	number	0	$C \cdot \mu m^{-1}$	For FloatMetal bc: The free charge per micron in Z dimension.
Thickness	number	2e-7	cm	The thickness of SiO <sub>2</sub> layer.
Eps	number	3.9	-	The relative permittivity of SiO <sub>2</sub> layer.
Heat.Transfer	number	1e3	W/(cm · K)	The heat transfer rate of boundary.
EXT.Temp	number	LatticeTemp	K	The external temperature.

### Example

```

BOUNDARY Type=InsulatorContract ID=SiSi02 Res=0 Cap=0 Ind=0 \
    Thickness=1e-6 Eps=3.9 WorkFunction=4.7 QF=0
BOUNDARY Type=InsulatorInterface ID=IFACE QF=0
BOUNDARY Type=GateContract ID=GATE Res=0 Cap=0 Ind=0 WorkFunction=4.7
BOUNDARY Type=NeumannBoundary ID=WALL Heat.Transfer=0 EXT.Temp=300
BOUNDARY Type=SchottkyContract ID=sgate Res=0 Cap=0 Ind=0 VBarrier=0.8
BOUNDARY Type=OhmicContract ID=OMANODE Res=0 Cap=0 Ind=0
BOUNDARY Type=OhmicContract ID=OMCATHODE Res=0 Cap=0 Ind=0

```

### Hint

Four "electrode" boundary conditions are supported by GSS. The names are ended with "Contact". The OhmicContact and SchottkyContact electrodes have current flow in both steady state and transient situations. While GateContact and InsulatorContact(a simplified MOSFET Gate boundary condition) only have displacement current in transient situation.

GSS supports five interfaces which can be set automatically: semiconductor-insulator interface(InsulatorInterface), semiconductor-electrode interface(set to OhmicContract as default), interface between different semiconductor material(Heterojunction) and interface between same semiconductor material(Homojunction). These boundaries can be set automatically by GSS if user didn't set them explicitly. However, the electrode-insulator interface, may have several situations: Gate to Oxide interface, FloatMetal to Oxide interface or Source/Drain electrode to Oxide interface. As a result, this interface can only be set correctly when electrode type is known. Please refer to the following **CONTACT** statement.

GSS can build region with metal or poly-Si material to form an electrode. Which means, i.e. for OhmicContact bc, one can simply specify a segment as Ohmic bc or build an electrode region as Ohmic electrode. Since Version 0.45.03, GSS considers electrode region, semiconductor region and insulator region during calculation. As a result, GSS added **CONTACT** statement for fast boundaries specification of electrode region. At present, GSS support electrode with the type of Ohmic, Schottky, Gate and FloatMetal. All the electrode should be specified explicitly and GSS will set corresponding boundaries automatically.

The "ID" parameter of **BOUNDARY** statement is limited to segment label. And The "ID" parameter of **CONTACT** statement is limited to region name.

The NeumannBoundary, which is the default boundary type for all the non-interface segments, can also be set automatically.

## 6.2 ATTACH

This statement is used to add voltage or current sources to the electrode boundary. The statement first clears all the sources connected to the specified electrode and then adds source(s) defined by VApp or IApp parameter. If two or more sources are attached to the same electrode, the total effect is the summation of all sources. However, the sources attached to one electrode must have the same type.

### Syntax

```
ATTACH Electrode=<s> Type=Voltage VApp=<s> [VApp=<s> ...]
ATTACH Electrode=<s> Type=Current IApp=<s> [IApp=<s> ...]
```

parameter	type	default	unit	description
Electrode	string	-	-	Specifies which electrode boundary is to be attached with one or more sources.
Type	string	Voltage	-	The sources are voltage or current type.
VApp	string	-	-	Specifies the ID of voltage source which is to be attached to this electrode.
IApp	string	-	-	Specifies the ID of current source which is to be attached to this electrode.

### Example

```
ATTACH Electrode=Collector VApp=VCC
ATTACH Electrode=Emitter VApp=GND
ATTACH Electrode=Base VApp=Vb VApp=Vs
ATTACH Electrode=Base Type=Current IApp=Ib IApp=Is
```

### Hint

If electrode is attached with voltage source(s), the R, C and L defined by **BOUNDARY** statement will affect later simulation. But solver will ignore those lumped elements with the electrode which stimulated by current source(s). Please refer to Fig 4.

The positive direction of current is flow into the electrode.

Only Ohmic and Schottky electrodes can be attached by current source(s).

If no source attached explicitly, the electrode is set to be attached to ground.

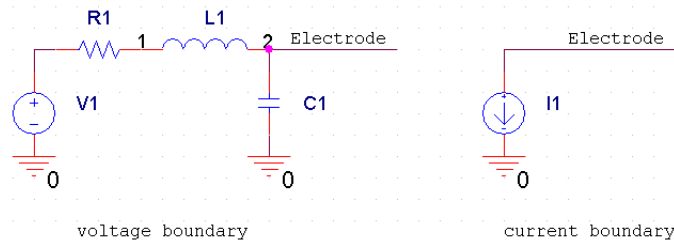


Figure 4: Voltage and current boundary.

## 7 Physical Model Interface

GSS use a dynamic mechanician to support various materials and physical models. Each material has a dynamic load library (.so) which contains its physical parameters. User can modify the parameters which can be found at \$(GSS\_DIR)/src/material and recompile it. Experts can even offer their own physical model files.

At present, GSS has a **PMIS** statement for choosing different mobility models and impact ionization models.

### Syntax

```
PMIS Region=<s>  Mobility=<s>  II.Model=<s>
```

parameter	type	default	unit	description
Region	string	-	-	Specifies the semiconductor region which use the following physical model.
Mobility	string	Analytic	-	The mobility model name.
II.Model	string	Default	-	The impact ionization model name.

### Example

```
PMIS Region=Si  Mobility=Philips
PMIS Region=Si  Mobility=Lucent  II.Model=Valdinoci
```

### Hint

One can set different physical models to individual region.

GSS has implemented Analytic, Philips and Lucent mobility model for all the supported material. The Analytic and Philips mobility model only takes parallel field effect and they can be used within all the four solvers. The author suggest to use these models for bipolar device simulations. The Lucent mobility model, which considers parallel and transverse electrical field, is an accurate model for MOS structure. But it should work with DDML1E/DDML2E solvers in which transverse electrical field is calculated. The Lombardi and HP (Hewlett-Packard) mobility model only validate for Silicon. These two mobility models include parallel and transverse electrical field corrections and can be used for MOSFET simulation. The Hypertang mobility model only validate for GaAs. It is reported that this model can avoid unrealistic drain current oscillation when applied to the simulation of GaAs MESFET.

The impact ionization model is still very limited in GSS. Only Valdinoci model for silicon is valid at present.



## 8 Solve Specification

### 8.1 Introduction

These statements instruct GSS core to perform user specified solution(s).

### 8.2 METHOD

The **METHOD** statement sets the solver and the parameters of the solver. At present, GSS 0.4x has basic DDM solver(DDML1E), lattice temperature corrected DDM solver(DDML2E) and EBML3E solver which base on energy balance model.

#### Syntax

```

METHOD Type=(DDML1E|DDMLE2|EBML3E|QDDML1E) Scheme=Newton
        HighFieldMobility=(On|Off)   EJModel=(On|Off)
        ImpactIonization=(On|Off)   II.Type=(EdotJ|EVector|ESide|GradQf)
        BandBandTunneling=(On|Off)
        Fermi=(On|Off)
        NS=(Basic|LineSearch|TrustRegion)
        LS=(SuperLU|LU|CGS|BICG|BCGS|GMRES|TFQMR)
        Damping=(BankRose|Potential|No)
        MaxIteration=<i> relative.tol=<n>
        possion.tol=<n>   elec.continuity.tol=<n>   hole.continuity.tol=<n>
        elec.energy.tol=<n>   hole.energy.tol=<n>   latt.temp.tol=<n>
        electrode.tol=<n>   toler.relax=<n>
        QNFactor=<n>   QPFactor=<n>

```

parameter	type	default	unit	description
Type	string	DDML1	-	Specifies the solver.
Scheme	string	Newton	-	At present, GSS only supports Newton's full iterative scheme.
HighFieldMobility	bool	On	-	Specifies if high field mobility should be used. GSS set this flag to OFF for equilibrium state.
EJModel	bool	Off	-	Specifies if EdotJ and EcrossJ should be use to calculate high field mobility. GSS will use a simpler model when this flag is set to OFF.
ImpactIonization	bool	Off	-	Specifies if impact ionization should be considered.
II.Type	string	GradQf	-	Specifies the implement model of impact ionization.
BandBandTunneling	string	Off	-	Specifies if band to band tunneling should be considered.
Fermi	bool	Off	-	Specifies if Fermi-Dirac statistics should be considered.
NS	string	LineSearch	-	Specifies the nonlinear solver.
LS	string	GMRES	-	Specifies the linear solver.
Damping	string	No	-	Load a Newton damping method for Line-Search or Basic Newton nonlinear solver.

MaxIteration	integer	30	-	The max number of iteration nonlinear solver will try. But for equilibrium state calculation, the max allowed iteration number is 10 times more than this value.
relative.tol	number	1e-5	-	When relative error of solution variable less than this value, solution is considered converged.
posson.tol	number	1e-26	$C \cdot \mu\text{m}^{-1}$	The absolute converged criteria for the Poisson equation.
elec.continuity.tol	number	5e-18	$A \cdot \mu\text{m}^{-1}$	The absolute converged criteria for the electron continuity equation.
hole.continuity.tol	number	5e-18	$A \cdot \mu\text{m}^{-1}$	The absolute converged criteria for the hole continuity equation.
elec.energy.tol	number	1e-18	$W \cdot \mu\text{m}^{-1}$	The absolute converged criteria for the electron energy balance equation.
hole.energy.tol	number	1e-18	$W \cdot \mu\text{m}^{-1}$	The absolute converged criteria for the hole energy balance equation.
latt.temp.tol	number	1e-11	$W \cdot \mu\text{m}^{-1}$	The absolute converged criteria for the lattice heat equation equation.
electrode.tol	number	1e-9	V	The absolute converged criteria for the electrode bias equation.
toler.relax	number	1e4	-	When relative error is used as converged criteria, the equation norm should satisfy the absolute converged criteria with a relaxation of this value.
QNFactor	number	1.0	-	The damping quantity of electron quantum potential.
QPFactor	number	1.0	-	The damping quantity of hole quantum potential.

### Example

```

METHOD  Type=DDML1E  Scheme=Newton  NS=LineSearch  LS=GMRES
METHOD  Type=DDML1E  Scheme=Newton  NS=TrustRegion  LS=LU
METHOD  Type=DDML2E  Scheme=Newton  NS=Basic  LS=TFGMR  Damping=Potential

```

### Hint

All the DDML1E/DDML2E/EBML3E/QDDML1E solvers support parallel and transverse electrical field dependent mobility.

Lattice temperature equation is considered by DDML2E solver. The EBML3E solver is based on advanced energy balance method. The QDDML1E is a density-gradient solver which consists of quantum correction to classical model.

The carrier generation by impact ionization and band band tunneling is really difficult for calculation. However, DDML1E/DDML2E solvers are carefully designed for impact ionization and band band tunneling calculation, i.e. diode reverse breakdown simulation. Usually, the temperature can't keep unchanged if carrier generation takes place. As a result, DDML2E solver is highly recommend for these types of situations. At present, EBML3E and QDDML1E solver don't support impact ionization.

Fermi statistics is only supported by DDML1E and DDML2E solvers.

LineSearch and TrustRegion accelerating methods work well when initial value a bit far from real solution, e.g. first time computing. Basic Newton method should only be used when initial value is near the true solution, e.g. dc sweep and transient calculation.

Each nonlinear solver should have a inner linear solver. To choose a suitable linear solver may help the convergence. The performance of LineSearch and Basic Newton methods is good when Krylov subspace linear solvers(CGS, BICG, BCGS, GMRES and TFQMR) are employed. However, the TrustRegion method prefers LU factorization linear solver to Krylov subspace linear solvers.

Newton Damping is a useful tool for helping convergence, especially for the Basic Newton method.

QNFactor and QPFactor is used to enforce the convergence property of QDDML1E solver. Since quantum solution differs much from classical solution near Si/SiO2 interface, setting these two factors with small value i.e. 1e-4 and varying it gradually to 1.0, with each step the solution can get convergence. At last, the value of QXFactor of 1.0 means that the quantum model is fully turned on and applied.

The parameters of **METHOD** statement will not be affected by previous **METHOD** statement.

The convergence is considered to be achieved when either the X norm or the function residual norm falls below certain tolerance. When every function's residual norm falls small than certain tolerance, the absolute convergence is achieved. For X norm criteria, it should fall below **relative.tol** and every function residual norm should fit the relaxed (with the relaxation value of **toler.relax**) absolute converged criteria.

### 8.3 SOLVE

The **SOLVE** statement instructs GSS to perform a solution for one or more specified bias points.

#### Syntax

```

SOLVE Type=EQUILIBRIUM
SOLVE Type=STEADYSTATE
SOLVE Type=DCSWEEP      VScan=<s> [VScan=<s> ...] [IVRecord=<s> ...]
                        [IVFile=<s>]  VStart=<s> VStep=<s> VStop=<n>
SOLVE Type=DCSWEEP      IScan=<s> [IVRecord=<s> ...]
                        [IVFile=<s>]  IStart=<s> IStep=<s> IStop=<n>
SOLVE Type=TRANSIENT    ODE.Formula=(BDF1|BDF2) [IVRecord=<s> ...]
                        [IVFile=<s>]  TStart=<n> TStep=<n> TStop=<n>
                        AutoStep=<b>  Predict=<b>

```

parameter	type	default	unit	description
Type	string	-	-	Specifies the Solve condition.
VScan	string	-	-	Specifies the voltage variational electrode boundary for DCSWEEP.
VStart	number	-	V	The initial voltage for DC sweep.
VStep	number	-	V	The voltage step size of DC sweep.
VStop	number	-	V	The finish voltage for DC sweep.
IScan	string	-	-	Specifies the current variational electrode boundary for DCSWEEP.
IStart	number	-	mA	The initial current for DC sweep.
IStep	number	-	mA	The current step size of DC sweep.
IStop	number	-	mA	The finish current for DC sweep.
IV.Record	string	-	-	Specifies which electrode's IV data should be recorded. User can define serval electrodes here.
IV.File	string	-	-	Specifies the file which contains the IV data.
ODE.Formula	string	BDF2	-	Specifies the time march scheme for solving the time-domain ordinary differential equation.
TStart	number	-	s	The initial time for transient calculation.
TStep	number	-	s	The time step size of transient calculation.
TStop	number	-	s	The finish time for transient calculation.
AutoStep	bool	-	True	Use automatically time step control based on LTE.
Predict	bool	-	True	Predict initial value for next time step.

#### Example

```

SOLVE Type=EQUILIBRIUM
SOLVE Type=DCSWEEP      VScan=Anode      IVRecord=Anode IVRecord=Cathode \
                        IVFile=ivfp.txt  VStart=0 VStep=1e-2 VStop=0.6

```

```

SOLVE      Type=DCSWEEP      IScan=Anode      IVRecord=Anode IVRecord=Cathode \
           IVFile=ivfp2.txt IStart=0.02 IStep=1e-2 IStop=1
SOLVE      Type=TRANSIENT IVRecord=Anode IVFile=iv.txt \
           TStart=0 TStep=1e-10 TStop=3e-8

```

### Hint

For equilibrium state calculation, all the electrodes are set to ground.

You can't do a DC sweep with current scan to GateContact and InsulatorContact.

When STEADYSTATE or DCSWEEP solve is performed, transient 0 value of the voltage(current) source will be used as the bias of each electrode.

One can do voltage DCSWEEP with multi-electrode by specifying two or more VScan parameter. The voltage will be assigned to each electrode during the simulation. This function is useful for Double Gate MOS simulation.

The step size for DCSWEEP calculation will automatically reduce to half size if last step diverged. Then it will be multiplied by 1.1 on each step until it reaches original step size.

TRANSIENT simulation now use automatically time step control based on LTE (local truncation error).

## 8.4 AC Sweep Solver

In addition to DC steady state and transient analysis, GSS now allows AC small-signal analysis as a post-processing step after a DC solution.

### Syntax

```

METHOD Type=DDML1AC    LS=(LU|CGS|BICG|BCGS|GMRES|TFQMR)
      HighFieldMobility=(On|Off)    EJModel=(On|Off)
      ImpactIonization=(On|Off)    II.Type=(EdotJ|EVector|ESide|GradQf)
      BandBandTunneling=(On|Off)
      Fermi=(On|Off)
SOLVE  Type=ACSWEEP    ACScan=<s> [IVRecord=<s> ...]
      [IVFile=<s>]      FStart=<s> FMultiple=<s> FStop=<n>    VAC=<n>

```

parameter	type	default	unit	description
ACScan	string	-	-	Specifies the electrode for ACSWEEP.
FStart	number	1e6	Hz	The initial frequency for AC sweep.
FMultiple	number	1.1	-	The multiplicative factor for incrementing frequency.
FStop	number	1e9	Hz	The finish frequency for AC sweep.
VAC	number	0.0026	V	The magnitude of the applied small-signal bias.

### Hint

This solver shared Jacobian Matrix with DDML1E solver. Which means one should call it directly after DDML1E, keeping all the parameters unchanged for **METHOD** statement. If a previous computed result is imported, call DDML1E to do a steady-state calculation again and run DDML1AC later.

The convergence may be difficult if frequency is very high, i.e. nearly cut off frequency, because of the poor condition number of Jacobian matrix.

## 8.5 EM FEM Solver

GSS has a electromagnetic solver based on finite element method. This solver calculates the distribution of electromagnetic field radiated by monochrome (light) wave. The photon generated carrier density in semiconductor region can be got at the same time.

### Syntax

```

PHOTOGEN  WAVELEN=<n> INTENSITY=<n>  [ANGLE=<n>]  WTM=<n> WTE=<n>
           [phase.diff=<n>] [quan.eff=<n>]
METHOD    Type=EMFEM      [LS=LU]
SOLVE
LSOURCE   Type=UNIFORM    Tdelay=<n> Power=<n>
LSOURCE   Type=PULSE      Tdelay=<n> Tr=<n> Tf=<n> Pw=<n> Pr=<n>
           Powerhi=<n>     Powerlo=<n>
LSOURCE   Type=LSHELL     DLL=<s> Func=<s>

```

### Syntax for PHOTOGEN

parameter	type	default	unit	description
WAVELEN	number	0.532	$\mu\text{m}$	The wavelength of incident monochrome wave.
INTENSITY	number	1.0	$\text{W} \cdot \text{cm}^{-2}$	The power density of incident wave.
ANGLE	number	90	degree	The clockwise angle of the ray direction relative to the horizontal axis.
WTM	number	1.0	-	The percentage of intensity of TM model.
WTE	number	0.0	-	The percentage of intensity of TE model.
phase.diff	number	0.0	degree	The differentiation of phase angle between TE model and TM model. $\Delta\Phi = \Phi_{TM} - \Phi_{TE}$
quan.eff	number	1.0	-	The quantum efficiency (which means electron-hole pares generated by one photon) of photon generation.

### Syntax for LSOURCE

parameter	type	default	unit	description
Type	string	-	-	The type of light source.
Tdelay	number	0.0	s	The delay time before the activation of the light source.
Tr	number	1e-15	s	The rise time of the intensity of the pulse-type light source.
Tf	number	1e-15	s	The fall time of the intensity of the pulse type light source.
Pw	number	0	s	The pulse width of the intensity of the pulse type light source.
Pr	number	0	s	The repetition period of the intensity of the pulse type light source.
Power	number	1.0	-	The multiply factor to photon generated carrier density.
Powerhi	number	1.0	-	The higher multiply factor to photon generated carrier density.
Powerlo	number	0	-	The lower multiply factor to photon generated carrier density.

DLL	string	-	-	The name of dynamic library file.
Func	string	-	-	The name of the function loaded from dynamic library file which calculates power coefficient.

### Hint

User need to build a vacuum region surrounding device and a PML region surrounding vacuum region. These two region should have a thickness of no less than one wave length.

The work flow of EMFEM solver shows as follows. GSS set its internal solver to EMFEM when meets **METHOD** command with **EMFEM** type. The actual solving action takes place when meets the next **SOLVE** command. GSS will search the first **PHOTOGEN** command in the input list, using the parameters in this command during the solve procedure. This **PHOTOGEN** command will be removed from input list after solving action. As a result, user can set multi **PHOTOGEN** statements and repeat **SOLVE** command for corresponding times to calculate several beams of monochrome wave, during which the photon generated carrier density will be added to previous result.

The iterative method such as GMRES usually leads to divergence when solving FEM problem. LU factorization is highly recommend.

EMFEM only gets the photon generated carrier density. User should set **one LSOURCE** to describe the time evolution of the light source. The actual photon generated carrier density used in semiconductor simulation is the original value multiplied with **power** coefficient specified within **LSOURCE**.

When DDML1E or DDML2E solver is loaded for further simulation, the photon generated carrier will be considered.

User can define their own light source by dynamic loaded library as voltage or current source. Here is a template.

```
foo.c:
double lsrc_power(double time) /* in the unit of s */
{
    double power;
    /* calculate the power of light source */
    return power;
}
```



## 8.6 IV File Format

GSS can generate IV record file for DC sweep, transient and AC sweep calculations. Here is the file format for the three situations.

The file for DC sweep: The first line is begin with '#', followed by the name of each electrode. The remain part is the potential and current for each electrode, each takes one column. The unit of potential is volt and the unit of current is mA.

The file for transient calculation is nearly the same as the file for DC sweep, besides that the first column is the time with the unit of ps.

The file for AC sweep has the same head as above. The remaining part is organized as follows: The first column is the frequency with the unit of MHz. Then the IV properties of each electrode. Each electrode takes six columns, the real, image and amplitude of potential, followed by three columns for current.

Note: the electrode potential may not equal to the application voltage if lumped elements take place.

## 9 File I/O

### 9.1 Introduction

The **IMPORT** and **EXPORT** statements are used to read and write solutions from a CGNS or TIF file. A model CGNS file only contains semiconductor device structure while a core CGNS file has previous solution data besides device structure. The TIF(Technology Interchange Format) file is an ASCII file used by Synopsys Medici software which equivalence to core CGNS file. We offer a small code TIFTool which can open TIF file, view the mesh and solution data and convert it to CGNS file.

### 9.2 IMPORT and EXPORT

#### Syntax

```
IMPORT  CoreFile=<s> | ModelFile=<s>
EXPORT  CoreFile=<s>  [ AscFile=<s> ]  [ VTKFile=<s> ]
```

parameter	type	default	unit	description
CoreFile	string	-	-	Write/read device structure and solution data to a CGNS file.
ModelFile	string	-	-	Read device structure from a CGNS file which probably crated by SGframework or converted from Medici TIF file by TIFTool.
AscFile	string	-	-	Write device structure and solution data to a TIF file. At present, we can't make our TIF file be accepted by Medici.
VTKFile	string	-	-	Write mesh and solution data to VTK file.

#### Example

```
EXPORT  CoreFile=init.cgns  AscFile=init.tif
IMPORT  ModelFile=pn.cgns
IMPORT  CoreFile=pn.cgns
```

#### Hint

VTK file is intended to be used for post process. User can use Paraview<sup>1</sup>, MayaVi or VisIt<sup>2</sup> to open and view VTK file. Further more, CGNS file is also supported by VisIt.

---

<sup>1</sup><http://www.paraview.org>

<sup>2</sup><http://www.llnl.gov/visit>

## 10 Post Process

### 10.1 Plot

The **PLOT** statement initializes the graphical display device for two and three dimensional plots of device characteristics(3D) and device meshes(2D).

#### Syntax

```
PlotMesh [TIFF.Out=<s>]
Plot Variable=Mesh [PS.Out=<s>] [TIFF.Out=<s>]
    [Resolution=(RES.Low|RES.Middle|RES.High)]
Plot Variable=(Na|Nd|ElecDensity|HoleDensity|Potential|EFieldX|EFieldy|Temperature)
    [ Measure=(Linear|SignedLog) ]
    [ PS.Out=<s> ] [ TIFF.Out=<s> ] [ Resolution=(RES.Low|RES.Middle|RES.High) ]
    [ AzAngle=<n> ] [ ElAngle=<n> ] [ Style=(Scale|Color|GrayLevel) ]
```

parameter	type	default	unit	description
Variable	string	-	-	This parameter specifies plot context.
PS.OUT	string	-	-	Specifies the postscript file name. The plot window will be saved to it.
TIFF.OUT	string	-	-	Specifies the TIFF file name. The plot window will be saved to it. Only available for X11 system.
Resolution	string	RES.Middle	-	The resolution of plot window.
Measure	string	Linear	-	Specifies the data axis to be linear or logarithmic.
AzAngle	number	240	degree	The initial azimuthal rotation angle, $0 \leq \text{AzAngle} < 360$ .
ElAngle	number	60	degree	The initial elevation rotation angle, $0 \leq \text{ElAngle} < 70$ .
Style	string	Color	-	The plot style.

#### Example

```
PLOT Variable=Mesh PS.OUT=mesh.ps
PLOT Variable=Nd Resolution=RES.High AzAngle=240 ElAngle=40 Style=Scale
PLOT Variable=Potential Resolution=RES.Middle TIFF.out=potential.tiff\
    AzAngle=240 ElAngle=40 Style=Color
```

#### Hint

**PlotMesh** is an interactive GUI for mesh display only exist for X11 system.

The **PLOT** command can be used on both X11 and Win32 systems. The 3D plot can be rotated by mouse and terminated by ESC key press. If PS.OUT or TIFF.OUT argument is specified, the latest window image will be saved.

## 10.2 Probe

The **PROBE** statement is used to extract field data along a user defined segment. The segment can be a boundary or a segment pre-defined in the region. For the in-region segment, GSS will set it as Neumann boundary with no heat flux which takes not effect to simulation result.

### Syntax

```
Probe Variable=(Na|Nd|ElecDensity|HoleDensity|Potential|EFieldX|EFieldy|Temperature)
      Region=<s> Segment=<s> ProbeFile=<s> Append=<b>
```

parameter	type	default	unit	description
Variable	string	-	-	This parameter specifies probe context.
Region	string	-	-	Specifies the region name which the segment belongs to.
Segment	string	-	-	Specifies the segment name for probing the data.
ProbeFile	string	-	-	The file name for recording the data.
Append	bool	OFF	-	Specifies the data should be appended to the file.

### Example

```
PROBE Variable=Nd           Region=Si Segment=PB1 ProbeFile=Nd.txt Append=Off
PROBE Variable=Potential    Region=Si Segment=PB2 ProbeFile=P.txt  Append=On
```

### Hint

Each **PROBE** statement records one variable for the whole segment to a user-specified file. GSS pushes **PROBE** statement as the sequence of input text into a stack until a **SOLVE** statement is met. These **PROBE** statements record the data during solve process. After that, GSS will clear the stack. In short, **PROBE** only operates for next **SOLVE** process.

The file format for probe is show as follows:

```
#region_name segment_name
#node_num  X    Y
#  0        x0  y0
#  1        x1  y1
#  .....
#SOLVE_TYPE variable_name
[V/I/Time]      v0    v1    v2 ...
.....
```

The head of file is the segment information, including region name, segment name, total node number and the location of each node. The last line of head shows the solve type and variable name. The solve type can be "EQUILIBRIUM", "STEADYSTATE", "DC-SWEEP\_VSCAN", "DCSWEEP\_ISCAN" and "TRANSIENT". For the last three types, GSS will record V/I/Time in the first column, respectively. The variable value for all the nodes are listed in the same line.

## 11 Convergence Problem

The core arithmetic of GSS is solving the large scale nonlinear equations arisen from semiconductor drift-diffusion model by Newton's Iterative method. There are three factors which affect the convergence of nonlinear solvers: the initial value, the Jacobian Matrix and the inner linear solver. One must ensure that the initial value is sufficiently near the real solution, the Jacobian Matrix is exact or at least nearly exact and the inner linear solver can give a suitable solution. When one of the three demands is not satisfied, the convergence problem may raise. However, several skills can help convergence.

If the first time running failed due to bad initial value, one can employ a transient solver to do a time evolved solution. Set time step to a few ps, and the solution on every step may get convergence. After some certain steps, the initial shock is damped and physical variables are forced to get close to real quantities. Then the steady-state solver may work and you can get the equilibrium solution.

Since version 0.46, GSS use automatically differentiation to calculate Jacobian matrix. In most situations, author can guarantee that Jacobian matrix is exact, except some rigorous situations when round-off error is un-neglectable. However, GSS offers alternative choice, the Matrix-Free method to set Jacobian Matrix by finite difference approximation. This choice can be invoked with the command line option *-snes\_mf\_operator*. The Matrix-Free method works well when impact ionization takes place, but it runs much slower than original method.

Sometimes the LineSearch method may failed due to bad search direction. If one get divergence message during DC sweep and transient simulation when using LineSearch method, one can try TrustRegion or basic Newton method.

Newton damping is a powerful tool to help convergence. It can work with LineSearch and Basic Newton solvers. GSS has two damping method, BankRose and Potential. Usually, damping Potential is better than BankRose.

The most difficult problem is the failure of inner linear solver. When the Jacobian Matrix is singular, problems may happen. Especially one sets electrodes with lumped resistor or current sources. If one get a convergence failed message for these situations, please check the problem by adding command line option *-ksp\_monitor* to exam the convergence history. For more information, one can use *-ksp\_singmonitor* to get the condition number of matrix (this works only with GMRES method).

The author suggests some method to overcome the problem. First, one may improve the condition number by enlarging the DopingScale, but this will increase numerical error. Second, one should carefully choose the linear solver.

Here is the introduction of the main linear solvers GSS can use. GMRES is a robust method for non-symmetric matrices. It must retain all the previous vectors during iterative. The implemented code often uses a "restart" method to avoid large memory requirement. Sometimes the solution breaks when restart too often. One can increase this restart steps by *-ksp\_gmres\_restart <n>* (n is the restart steps, default 150) BiCG and CGS often have irregular convergence behavior. The irregular result may get things worse. Bi-CGSTAB is the improved method to BiCG and CGS, which avoids the irregular convergence patterns of BiCG/CGS while maintaining about the same speed of convergence. TFQMR avoids the irregular convergence behavior of BiCG. Also it avoids some breakdown situations of BiCG. When BiCG temporarily stagnates or diverges, TFQMR may still works. At last, LU factor-

ization is the basic method for solving linear systems. Besides build-in LU solver, PETSC can be compiled with external LU factorization package such as SuperLU and UMFPACK. This method works slow but usually more stable than iteration solver.

In conclusion, LU factorization is recommend for conquering the singular problem. But user can try GMRES with large restart steps, Bi-CGSTAB and TFQMR methods for better efficiency.

## 12 Memory and CPU requirement

Thanks to C++'s dynamic memory manege system, GSS can solve problems with any scale (at least, theoretically). The memory requirement is not a serious bottleneck. A very large problem which contains 100K nodes only requires about 300MB memory. This requirement is easy to be satisfied with modern computers.

Because the core arithmetic of GSS is solving nonlinear equations, which involves lots of solutions of linear system, the CPU time is related with linear solvers, which is  $O(n^3)$  with LU solver and  $O(n^2)$  with krylov iterative solver, in which  $n$  is the problem scale.

Fig5 shows the CPU time vs node number with a PN diode simulation by BCGS method on a Xeon 3.6GHz workstation. The time is approximate the square of problem scale. It only requires serial seconds when total node number less than 5000. But CPU time raises to some minutes when node's number reach to 100K.

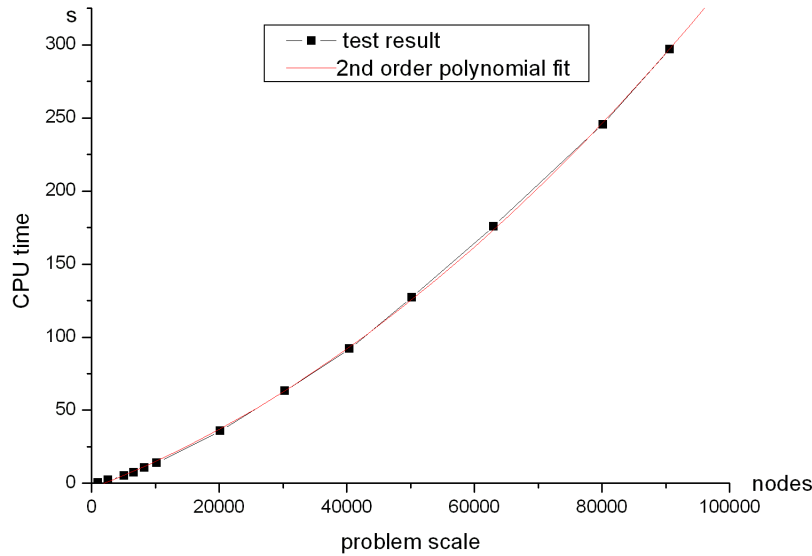


Figure 5: CPU time vs problem scale

## A GNU Free Documentation License

Version 1.2, November 2002

Copyright © 2000,2001,2002 Free Software Foundation, Inc.  
59 Temple Place, Suite 330, Boston, MA 02111-1307 USA

Everyone is permitted to copy and distribute verbatim copies of this license document, but changing it is not allowed.

### Preamble

The purpose of this License is to make a manual, textbook, or other functional and useful document “free” in the sense of freedom: to assure everyone the effective freedom to copy and redistribute it, with or without modifying it, either commercially or noncommercially. Secondly, this License preserves for the author and publisher a way to get credit for their work, while not being considered responsible for modifications made by others.

This License is a kind of “copyleft”, which means that derivative works of the document must themselves be free in the same sense. It complements the GNU General Public License, which is a copyleft license designed for free software.

We have designed this License in order to use it for manuals for free software, because free software needs free documentation: a free program should come with manuals providing the same freedoms that the software does. But this License is not limited to software manuals; it can be used for any textual work, regardless of subject matter or whether it is published as a printed book. We recommend this License principally for works whose purpose is instruction or reference.

### A.1 Applicability and definitions

This License applies to any manual or other work, in any medium, that contains a notice placed by the copyright holder saying it can be distributed under the terms of this License. Such a notice grants a world-wide, royalty-free license, unlimited in duration, to use that work under the conditions stated herein. The “Document”, below, refers to any such manual or work. Any member of the public is a licensee, and is addressed as “you”. You accept the license if you copy, modify or distribute the work in a way requiring permission under copyright law.

A “Modified Version” of the Document means any work containing the Document or a portion of it, either copied verbatim, or with modifications and/or translated into another language.

A “Secondary Section” is a named appendix or a front-matter section of the Document that deals exclusively with the relationship of the publishers or authors of the Document to the Document’s overall subject (or to related matters) and contains nothing that could fall directly within that overall subject. (Thus, if the Document is in part a textbook of mathematics, a Secondary Section may not explain any mathematics.) The relationship could be a matter of historical connection with the subject or with related matters, or of legal, commercial, philosophical, ethical or political position regarding them.

The “Invariant Sections” are certain Secondary Sections whose titles are designated, as being those of Invariant Sections, in the notice that says that the Document is released under this License. If a section does not fit the above definition of Secondary then it is not allowed to be designated as Invariant. The Document may contain zero Invariant Sections. If the Document does not identify any Invariant Sections then there are none.

The “Cover Texts” are certain short passages of text that are listed, as Front-Cover Texts or Back-Cover Texts, in the notice that says that the Document is released under this License. A Front-Cover Text may be at most 5 words, and a Back-Cover Text may be at most 25 words.

A “Transparent” copy of the Document means a machine-readable copy, represented in a format whose specification is available to the general public, that is suitable for revising the document straightforwardly with generic text editors or (for images composed of pixels) generic paint programs or (for drawings) some widely available drawing editor, and that is suitable for input to text formatters or for automatic translation to a variety of formats suitable for input to text formatters. A copy made in an otherwise Transparent file format whose markup, or absence of markup, has been arranged to thwart or discourage subsequent modification by readers is not Transparent. An image format is not Transparent if used for any substantial amount of text. A copy that is not “Transparent” is called “Opaque”.

Examples of suitable formats for Transparent copies include plain ASCII without markup, Texinfo input format,  $\LaTeX$  input format, SGML or XML using a publicly available DTD, and standard-conforming simple HTML, PostScript or PDF designed for human modification. Examples of transparent image formats include PNG, XCF and JPG. Opaque formats include proprietary formats that can be read and edited only by proprietary word processors, SGML or XML for which the DTD and/or processing tools are not generally available, and the machine-generated HTML, PostScript or PDF produced by some word processors for output purposes only.

The “Title Page” means, for a printed book, the title page itself, plus such following pages as are needed to hold, legibly, the material this License requires to appear in the title page. For works in formats which do not have any title page as such, “Title Page” means the text near the most prominent appearance of the work’s title, preceding the beginning of the body of the text.

A section “Entitled XYZ” means a named subunit of the Document whose title either is precisely XYZ or contains XYZ in parentheses following text that translates XYZ in another language. (Here XYZ stands for a specific section name mentioned below, such as “Acknowledgements”, “Dedications”, “Endorsements”, or “History”.) To “Preserve the Title” of such a section when you modify the Document means that it remains a section “Entitled XYZ” according to this definition.

The Document may include Warranty Disclaimers next to the notice which states that this License applies to the Document. These Warranty Disclaimers are considered to be included by reference in this License, but only as regards disclaiming warranties: any other implication that these Warranty Disclaimers may have is void and has no effect on the meaning of this License.



## A.2 Verbatim copying

You may copy and distribute the Document in any medium, either commercially or non-commercially, provided that this License, the copyright notices, and the license notice saying this License applies to the Document are reproduced in all copies, and that you add no other conditions whatsoever to those of this License. You may not use technical measures to obstruct or control the reading or further copying of the copies you make or distribute. However, you may accept compensation in exchange for copies. If you distribute a large enough number of copies you must also follow the conditions in section [A.3](#).

You may also lend copies, under the same conditions stated above, and you may publicly display copies.

## A.3 Copying in quantity

If you publish printed copies (or copies in media that commonly have printed covers) of the Document, numbering more than 100, and the Document's license notice requires Cover Texts, you must enclose the copies in covers that carry, clearly and legibly, all these Cover Texts: Front-Cover Texts on the front cover, and Back-Cover Texts on the back cover. Both covers must also clearly and legibly identify you as the publisher of these copies. The front cover must present the full title with all words of the title equally prominent and visible. You may add other material on the covers in addition. Copying with changes limited to the covers, as long as they preserve the title of the Document and satisfy these conditions, can be treated as verbatim copying in other respects.

If the required texts for either cover are too voluminous to fit legibly, you should put the first ones listed (as many as fit reasonably) on the actual cover, and continue the rest onto adjacent pages.

If you publish or distribute Opaque copies of the Document numbering more than 100, you must either include a machine-readable Transparent copy along with each Opaque copy, or state in or with each Opaque copy a computer-network location from which the general network-using public has access to download using public-standard network protocols a complete Transparent copy of the Document, free of added material. If you use the latter option, you must take reasonably prudent steps, when you begin distribution of Opaque copies in quantity, to ensure that this Transparent copy will remain thus accessible at the stated location until at least one year after the last time you distribute an Opaque copy (directly or through your agents or retailers) of that edition to the public.

It is requested, but not required, that you contact the authors of the Document well before redistributing any large number of copies, to give them a chance to provide you with an updated version of the Document.

## A.4 Modifications

You may copy and distribute a Modified Version of the Document under the conditions of sections [A.2](#) and [A.3](#) above, provided that you release the Modified Version under precisely this License, with the Modified Version filling the role of the Document, thus licensing distribution and modification of the Modified Version to whoever possesses a copy of it. In addition, you must do these things in the Modified Version:

- A. Use in the Title Page (and on the covers, if any) a title distinct from that of the Document, and from those of previous versions (which should, if there were any, be listed in the History section of the Document). You may use the same title as a previous version if the original publisher of that version gives permission.
- B. List on the Title Page, as authors, one or more persons or entities responsible for authorship of the modifications in the Modified Version, together with at least five of the principal authors of the Document (all of its principal authors, if it has fewer than five), unless they release you from this requirement.
- C. State on the Title page the name of the publisher of the Modified Version, as the publisher.
- D. Preserve all the copyright notices of the Document.
- E. Add an appropriate copyright notice for your modifications adjacent to the other copyright notices.
- F. Include, immediately after the copyright notices, a license notice giving the public permission to use the Modified Version under the terms of this License, in the form shown in the Addendum below.
- G. Preserve in that license notice the full lists of Invariant Sections and required Cover Texts given in the Document's license notice.
- H. Include an unaltered copy of this License.
- I. Preserve the section Entitled "History", Preserve its Title, and add to it an item stating at least the title, year, new authors, and publisher of the Modified Version as given on the Title Page. If there is no section Entitled "History" in the Document, create one stating the title, year, authors, and publisher of the Document as given on its Title Page, then add an item describing the Modified Version as stated in the previous sentence.
- J. Preserve the network location, if any, given in the Document for public access to a Transparent copy of the Document, and likewise the network locations given in the Document for previous versions it was based on. These may be placed in the "History" section. You may omit a network location for a work that was published at least four years before the Document itself, or if the original publisher of the version it refers to gives permission.
- K. For any section Entitled "Acknowledgements" or "Dedications", Preserve the Title of the section, and preserve in the section all the substance and tone of each of the contributor acknowledgements and/or dedications given therein.
- L. Preserve all the Invariant Sections of the Document, unaltered in their text and in their titles. Section numbers or the equivalent are not considered part of the section titles.
- M. Delete any section Entitled "Endorsements". Such a section may not be included in the Modified Version.

- N. Do not retitle any existing section to be Entitled “Endorsements” or to conflict in title with any Invariant Section.
- O. Preserve any Warranty Disclaimers.

If the Modified Version includes new front-matter sections or appendices that qualify as Secondary Sections and contain no material copied from the Document, you may at your option designate some or all of these sections as invariant. To do this, add their titles to the list of Invariant Sections in the Modified Version’s license notice. These titles must be distinct from any other section titles.

You may add a section Entitled “Endorsements”, provided it contains nothing but endorsements of your Modified Version by various parties—for example, statements of peer review or that the text has been approved by an organization as the authoritative definition of a standard.

You may add a passage of up to five words as a Front-Cover Text, and a passage of up to 25 words as a Back-Cover Text, to the end of the list of Cover Texts in the Modified Version. Only one passage of Front-Cover Text and one of Back-Cover Text may be added by (or through arrangements made by) any one entity. If the Document already includes a cover text for the same cover, previously added by you or by arrangement made by the same entity you are acting on behalf of, you may not add another; but you may replace the old one, on explicit permission from the previous publisher that added the old one.

The author(s) and publisher(s) of the Document do not by this License give permission to use their names for publicity for or to assert or imply endorsement of any Modified Version.

## A.5 Combining documents

You may combine the Document with other documents released under this License, under the terms defined in section A.4 above for modified versions, provided that you include in the combination all of the Invariant Sections of all of the original documents, unmodified, and list them all as Invariant Sections of your combined work in its license notice, and that you preserve all their Warranty Disclaimers.

The combined work need only contain one copy of this License, and multiple identical Invariant Sections may be replaced with a single copy. If there are multiple Invariant Sections with the same name but different contents, make the title of each such section unique by adding at the end of it, in parentheses, the name of the original author or publisher of that section if known, or else a unique number. Make the same adjustment to the section titles in the list of Invariant Sections in the license notice of the combined work.

In the combination, you must combine any sections Entitled “History” in the various original documents, forming one section Entitled “History”; likewise combine any sections Entitled “Acknowledgements”, and any sections Entitled “Dedications”. You must delete all sections Entitled “Endorsements”.

## A.6 Collections of documents

You may make a collection consisting of the Document and other documents released under this License, and replace the individual copies of this License in the various documents

with a single copy that is included in the collection, provided that you follow the rules of this License for verbatim copying of each of the documents in all other respects.

You may extract a single document from such a collection, and distribute it individually under this License, provided you insert a copy of this License into the extracted document, and follow this License in all other respects regarding verbatim copying of that document.

## A.7 Aggregation with independent works

A compilation of the Document or its derivatives with other separate and independent documents or works, in or on a volume of a storage or distribution medium, is called an “aggregate” if the copyright resulting from the compilation is not used to limit the legal rights of the compilation’s users beyond what the individual works permit. When the Document is included in an aggregate, this License does not apply to the other works in the aggregate which are not themselves derivative works of the Document.

If the Cover Text requirement of section A.3 is applicable to these copies of the Document, then if the Document is less than one half of the entire aggregate, the Document’s Cover Texts may be placed on covers that bracket the Document within the aggregate, or the electronic equivalent of covers if the Document is in electronic form. Otherwise they must appear on printed covers that bracket the whole aggregate.

## A.8 Translation

Translation is considered a kind of modification, so you may distribute translations of the Document under the terms of section A.4. Replacing Invariant Sections with translations requires special permission from their copyright holders, but you may include translations of some or all Invariant Sections in addition to the original versions of these Invariant Sections. You may include a translation of this License, and all the license notices in the Document, and any Warranty Disclaimers, provided that you also include the original English version of this License and the original versions of those notices and disclaimers. In case of a disagreement between the translation and the original version of this License or a notice or disclaimer, the original version will prevail.

If a section in the Document is Entitled “Acknowledgements”, “Dedications”, or “History”, the requirement (section A.4) to Preserve its Title (section A.1) will typically require changing the actual title.

## A.9 Termination

You may not copy, modify, sublicense, or distribute the Document except as expressly provided for under this License. Any other attempt to copy, modify, sublicense or distribute the Document is void, and will automatically terminate your rights under this License. However, parties who have received copies, or rights, from you under this License will not have their licenses terminated so long as such parties remain in full compliance.

## A.10 Future revisions of this license

The Free Software Foundation may publish new, revised versions of the GNU Free Documentation License from time to time. Such new versions will be similar in spirit to the present version, but may differ in detail to address new problems or concerns. See <http://www.gnu.org/copyleft/>.

Each version of the License is given a distinguishing version number. If the Document specifies that a particular numbered version of this License “or any later version” applies to it, you have the option of following the terms and conditions either of that specified version or of any later version that has been published (not as a draft) by the Free Software Foundation. If the Document does not specify a version number of this License, you may choose any version ever published (not as a draft) by the Free Software Foundation.

## Addendum: how to use this license for your documents

To use this License in a document you have written, include a copy of the License in the document and put the following copyright and license notices just after the title page:

Copyright © YEAR YOUR NAME. Permission is granted to copy, distribute and/or modify this document under the terms of the GNU Free Documentation License, Version 1.2 or any later version published by the Free Software Foundation; with no Invariant Sections, no Front-Cover Texts, and no Back-Cover Texts. A copy of the license is included in the section entitled “GNU Free Documentation License”.

If you have Invariant Sections, Front-Cover Texts and Back-Cover Texts, replace the “with...Texts.” line with this:

with the Invariant Sections being LIST THEIR TITLES, with the Front-Cover Texts being LIST, and with the Back-Cover Texts being LIST.

If you have Invariant Sections without Cover Texts, or some other combination of the three, merge those two alternatives to suit the situation.

If your document contains nontrivial examples of program code, we recommend releasing these examples in parallel under your choice of free software license, such as the GNU General Public License, to permit their use in free software.